

Heckler

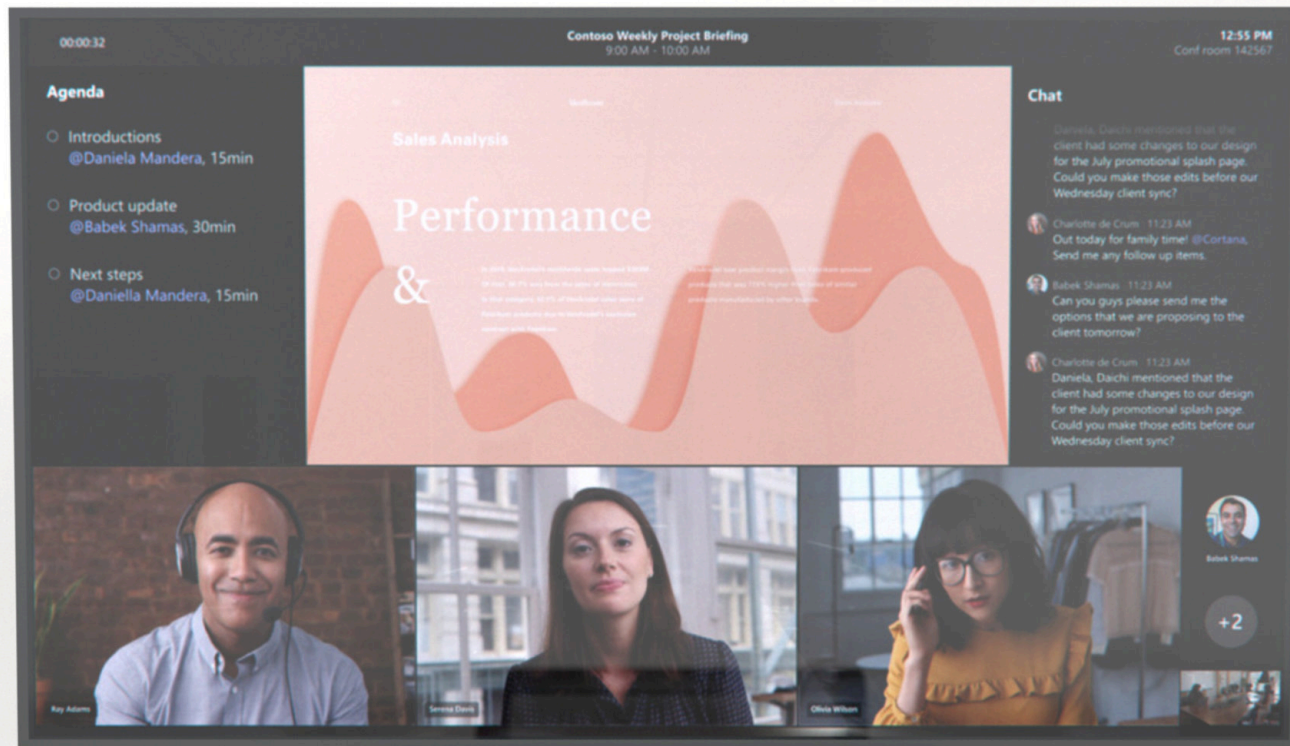
Video Enable Small Spaces in Minutes

Heckler Express Install Tabletop Stand
H1090





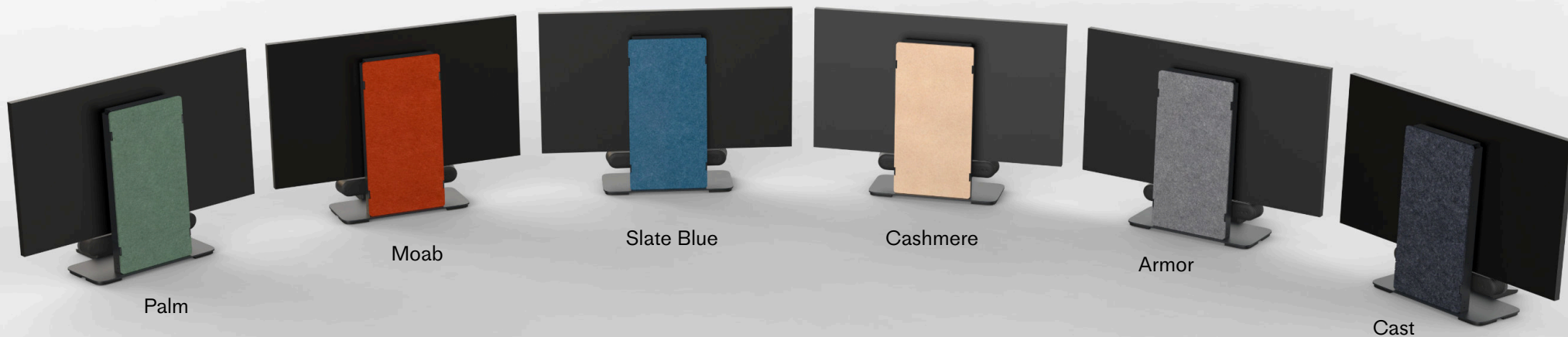
Shown with cover removed.



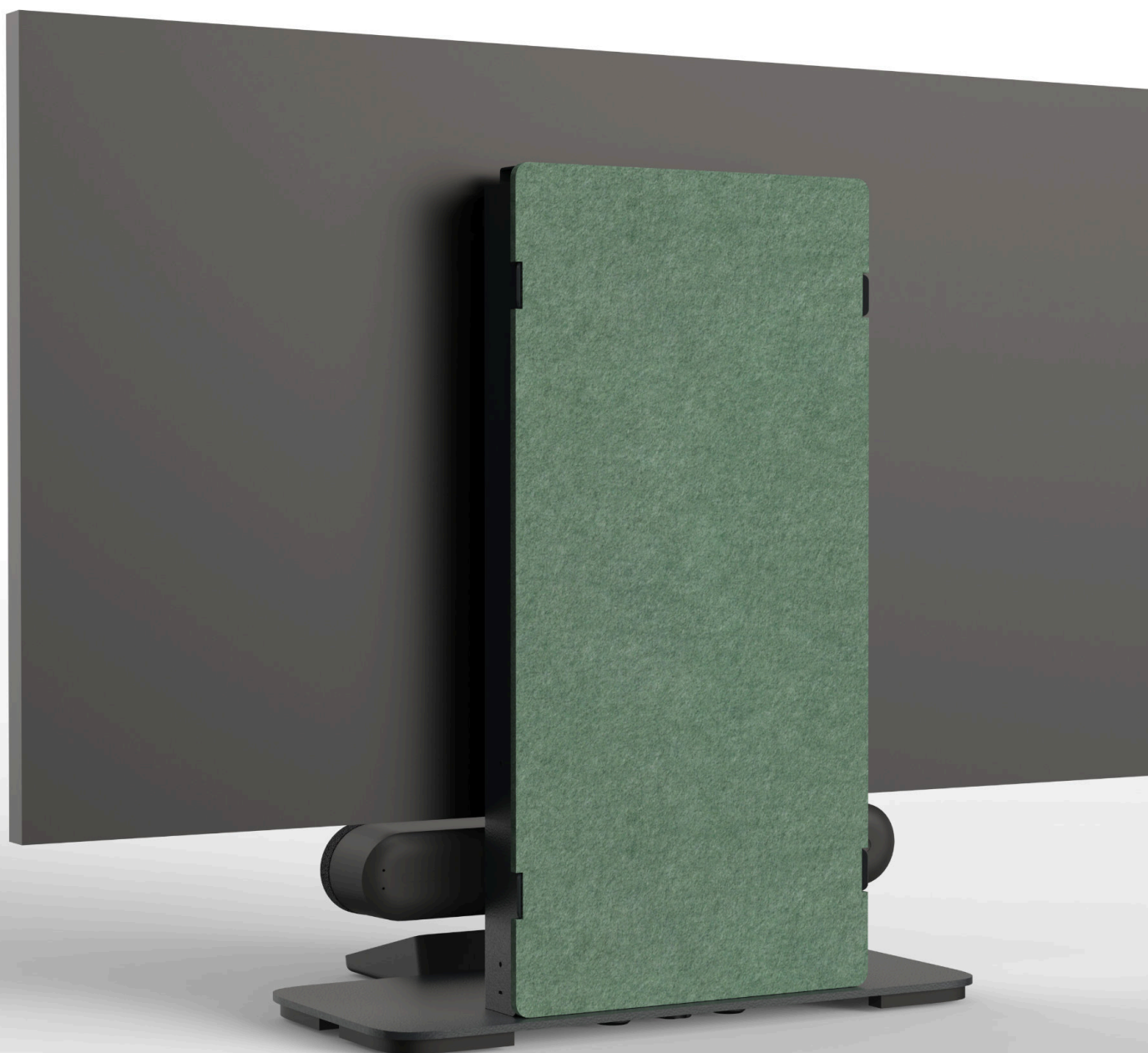
Shown with a 50-inch display.
Not included.



Shown with Cast cover.



The standard cover is in Cast color. Covers in all 42 Felt Right colors, along with custom artwork options, are available at Heckler.com and through special order.



Shown with Palm cover.



Shown with Moab panel.

Heckler

Deploy Microsoft Teams Rooms. Anywhere.
In Under an Hour.

Microsoft's Express Install initiative for Teams Rooms is designed to simplify and speed up room deployments with pre-configured hardware solutions that require minimal setup. The program focuses on fast, repeatable installations that avoid in-wall wiring, reduce contractor involvement, and minimize downtime—empowering organizations to scale their meeting spaces quickly and cost-effectively.

The Heckler Express Install Tabletop Stand is purpose-built for this initiative. It enables one person to deploy a fully functional Teams Room in under an hour, without tools, wall mounts, or room modifications. With built-in device organization, compatibility with Teams-certified Logitech devices, and a clean, compact aesthetic, this stand delivers on every promise of the Express Install approach.



Heckler

Features

No wall mounting. No special tools. No room modifications. No contractor scheduling.

Tool-free assembly.

Compatible with Logitech Teams Devices:
Rally Bar Mini, Rally Bar Huddle, MeetUp 2,
Logitech Tap & Tap IP.

Compatible with most 43-inch, 50-inch, and
55-inch displays.

Compatible with VESA 100, VESA 200, and
VESA 300 displays.

Universal camera-mounting hole pattern
compatible with wall mounts from all popular
video bar brands.



Heckler

Features

Ample field of Heckler Grid for cable management and mounting of Mini PC, power adapters, networking switch, PoE injector, and power strip.

Everything mounts cleanly with included thumbscrews and Velcro—no tools needed.

25-pound, thick steel base for stable installations. Table fastening supported.

RF-transparent Felt Right panel in 42 colors. Optional custom logo printing.

ADA, ACA, and TAA compliant.

Compact shipping (up to 20 units per pallet).

M6 and M8 display-mounting hardware included.

Made in Phoenix, Arizona.



Heckler

In the box

Device Panel

Base

Column

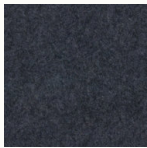
Cover

Display-mounting hardware



Heckler

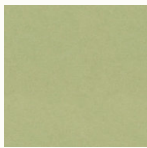
Cast cover is standard. All 42 colors are available today directly at Heckler.com or through special order through our distribution partners.



Cast



Armor



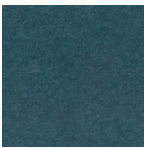
Aloe



Aries



Ash



Atlantic



Admiral



Baby Blue



Cashmere



Cayman



Cinnamon



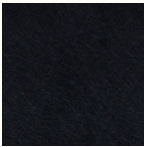
Citrine



Cocoa



Coral



Ebony



Fog



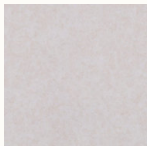
Indigo



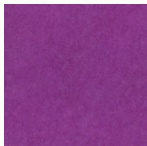
Ivory



Kiwi



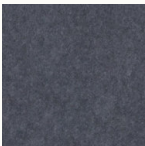
Latte



Lavender



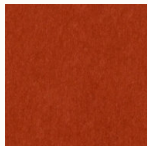
Lilac



Mineral



Mint



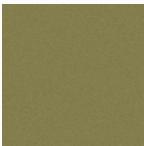
Moab



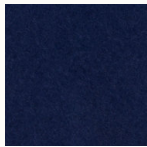
Mustard



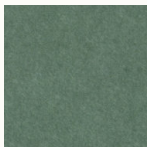
Nickel



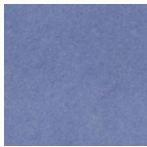
Olive



Oxford



Palm



Periwinkle



Plum



Porcelain



Raspberry



Ruby



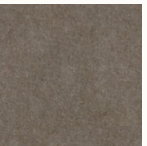
Sage



Scarlet



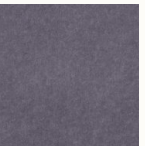
Slate Blue



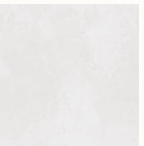
Timber



Wine

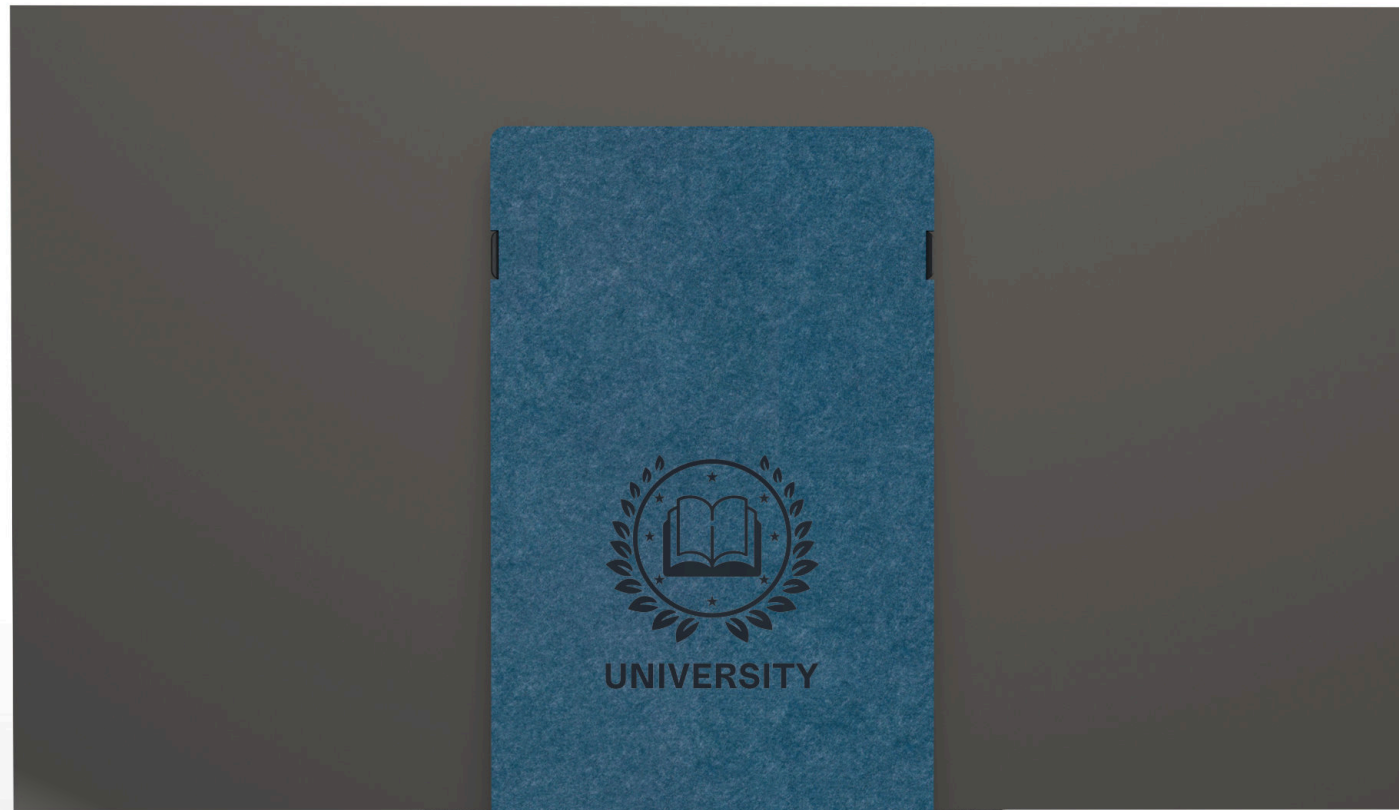


Wisteria



Zinc

Heckler



Shown with Slate Blue
cover with customized
logo print.

Specifications

SKU	H1090	
Colors	Admiral, Aloe, Aries, Armor, Ash, Atlantic, Baby Blue, Cashmere, Cast, Cayman, Cinnamon, Citrine, Cocoa, Coral, Ebony, Fog, Indigo, Ivory, Kiwi, Latte, Lavender, Lilac, Mineral, Mint, Moab, Mustard, Nickel, Olive, Oxford, Palm, Periwinkle, Plum, Porcelain, Raspberry, Ruby, Sage, Scarlet, Slate Blue, Timber, Wine, Wisteria, Zinc	
Warranty	Two years	
Product Dimension	28 x 23 x 10.4 inches (715 x 584 x 263 mm)	
Product Weight	30 lbs (13.6 kg)	
Shipping Dimension	30 x 21.5 x 4 inches (762 x 546 x 102 mm)	
Shipping Weight	35 lbs (15.9 kg)	
Material	PET Felt Powdercoated steel Urethane plastic	
Country of Origin	US. TAA compliant.	
Compatibility	Most 43-inch, 50-inch, 55-inch displays with VESA 100, VESA 200 and VESA 300 horizontal pattern.	
In the box	Device Panel Base Column Cover Display-mounting hardware	<div><div>For more information, contact Heckler or your favorite Heckler Authorized Dealer.</div><div>heckler.com sales@hecklerdesign.com (844) 432-5930</div></div>

Heckler

Specifications

