



Classroom Credenza

H732-BG

User Guide

REV 01
11-16-23

Heckler

Step 1: Install the French cleat

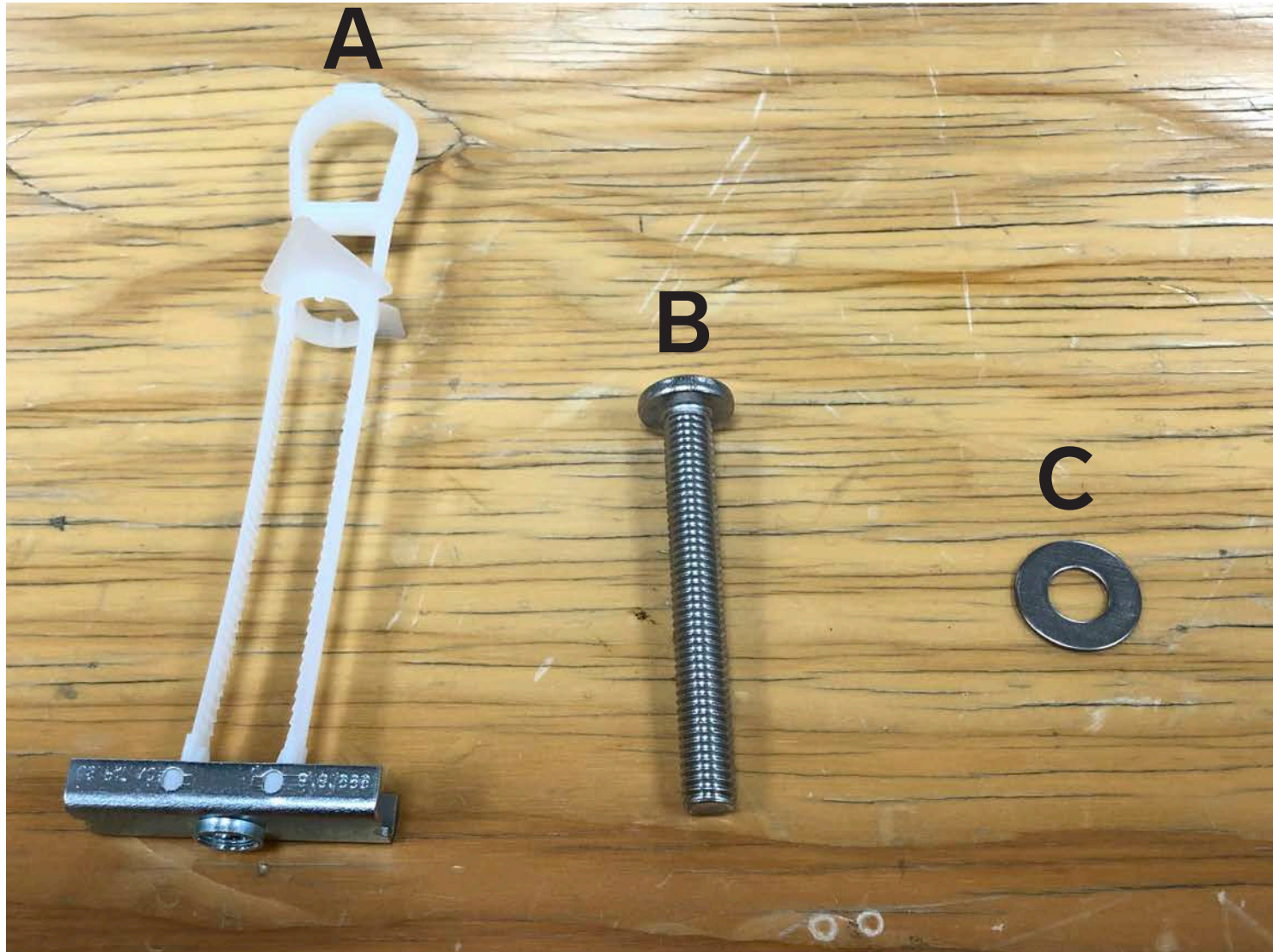


Parts provided:

A. 3 x SNAPTOGGLE Wall Anchors

B. 3 x Screw, 3/8", 3" Long

C. 3 x Washers



Tools needed:

- Level
- Tape Measure
- Power Drill
- Pen
- Stud Finder
- 3/4" Spade or Forstner bit

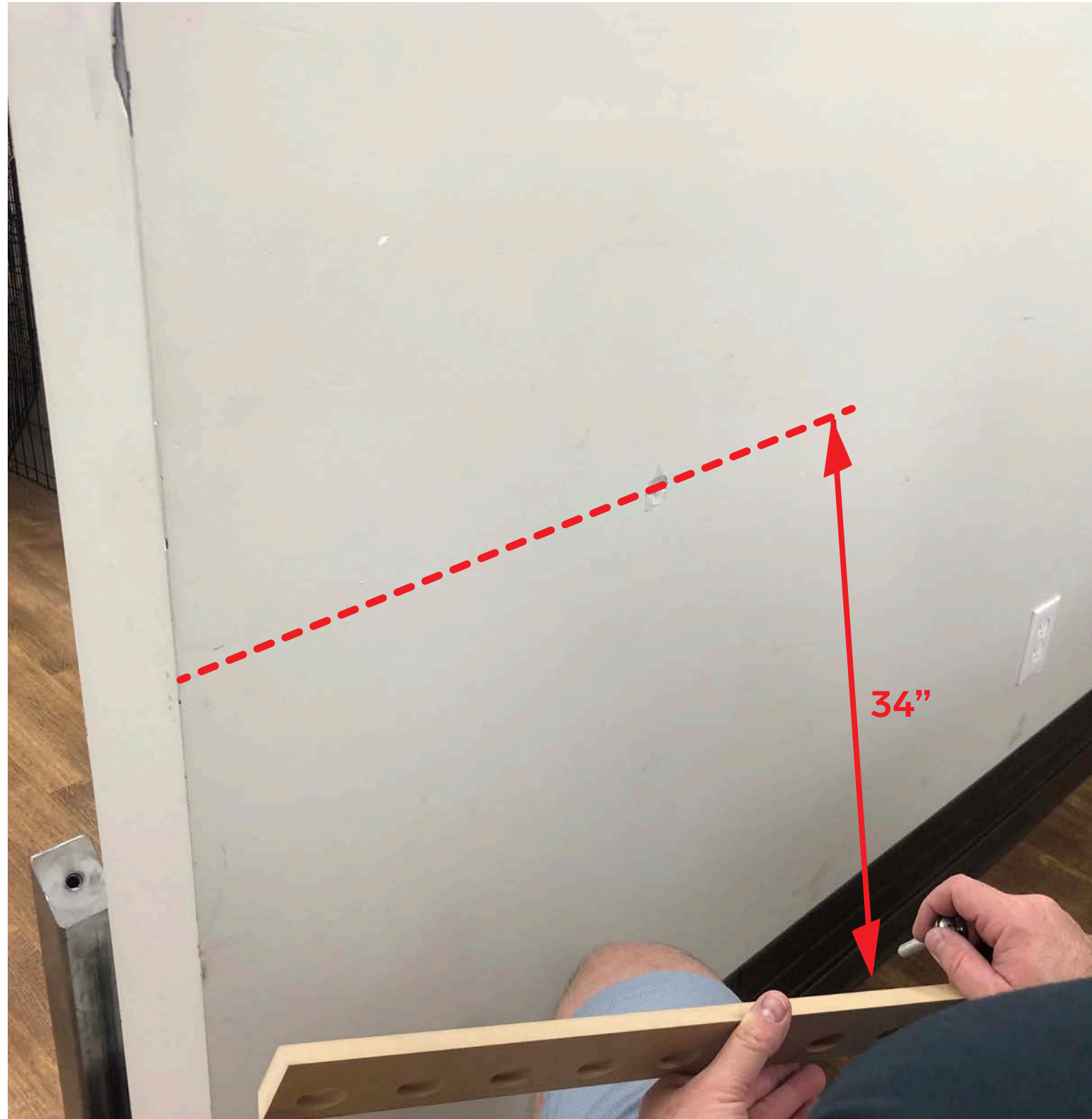
* For drilling a 3/4" hole through steel studs, we recommend using a conical step bit.

1. Determine the left-to-right center point for the location in which the Credenza will be installed. Mark the wall 34 inches above the finished floor at this location.

2. Mark your wall stud positions along the length of the cleat, 34" above the finished floor. For safety, we recommend you position the cleat to the wall so that the French cleat is fastened to at least one wall stud.

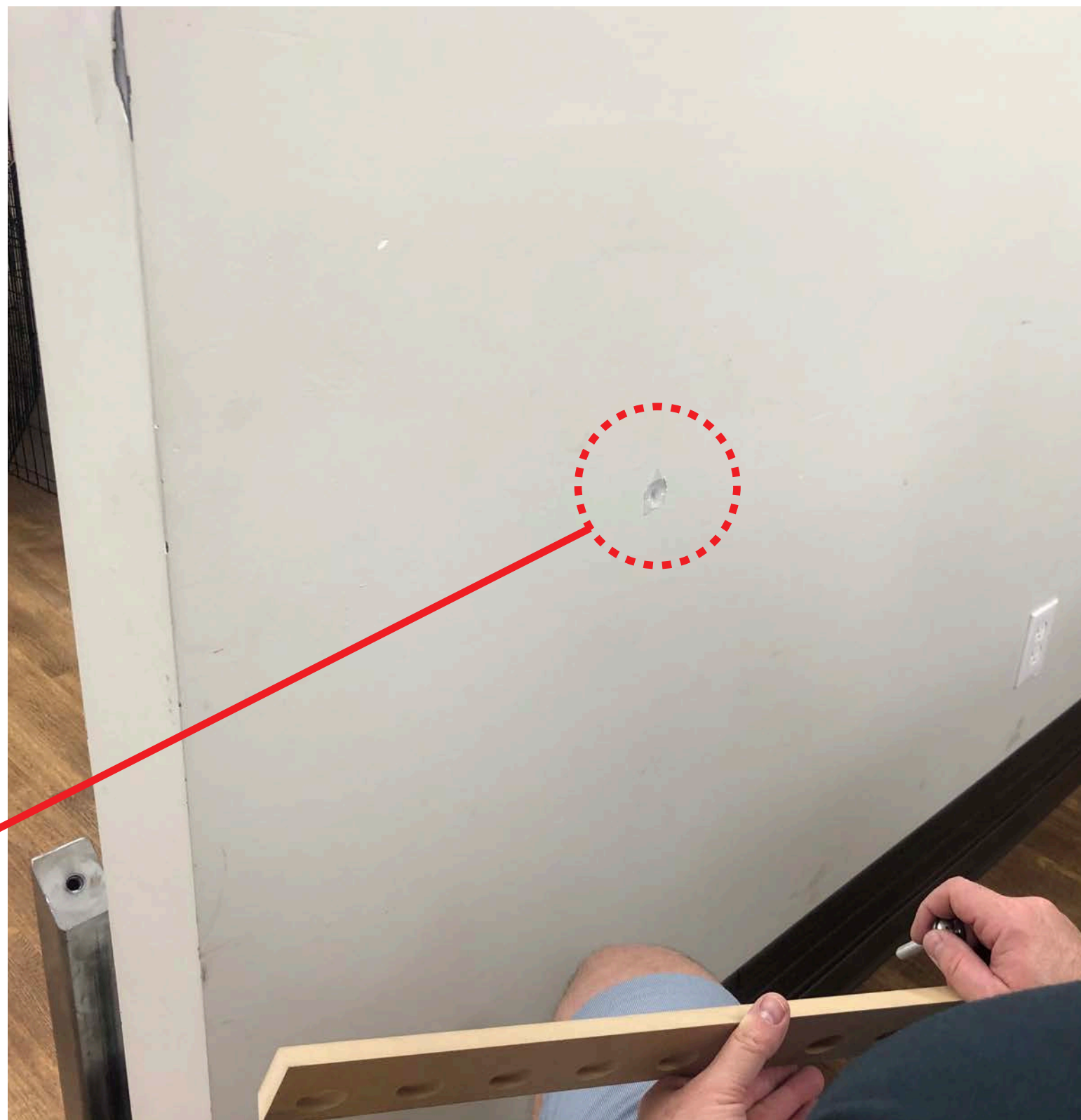
The SNAPTOGGLE anchors provided are compatible with drywall and most steel wall studs.

If wood wall studs are present, please fasten the French cleat to at least one stud using correctly-sized lag bolts and washes (not included).

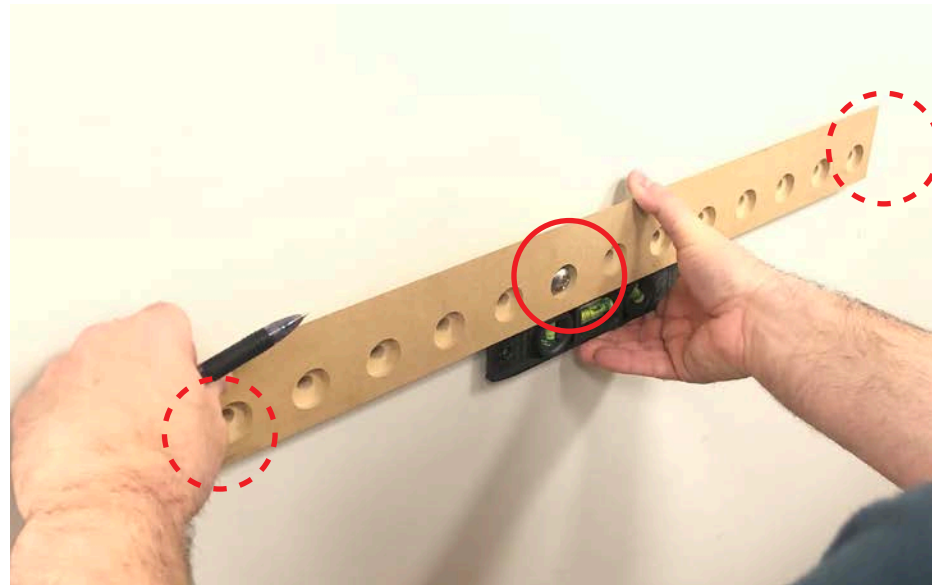


3. Starting at the center of the cleat, drill and install the first wall anchor.

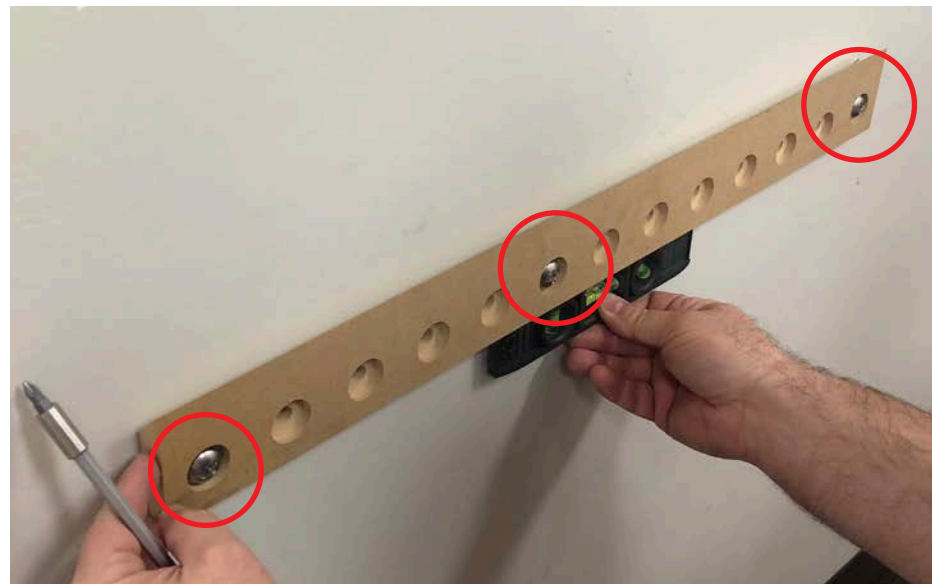
For installation information of the SNAPTOGGLE wall anchors, go [here](#).



4. Fasten the cleat to the wall at this center position. Use a level, then mark two additional mounting points using the cleat as your hole template.



5. Install two additional wall anchors and fasten the cleat to those positions.



Step 2: Install the AV equipment into the credenza



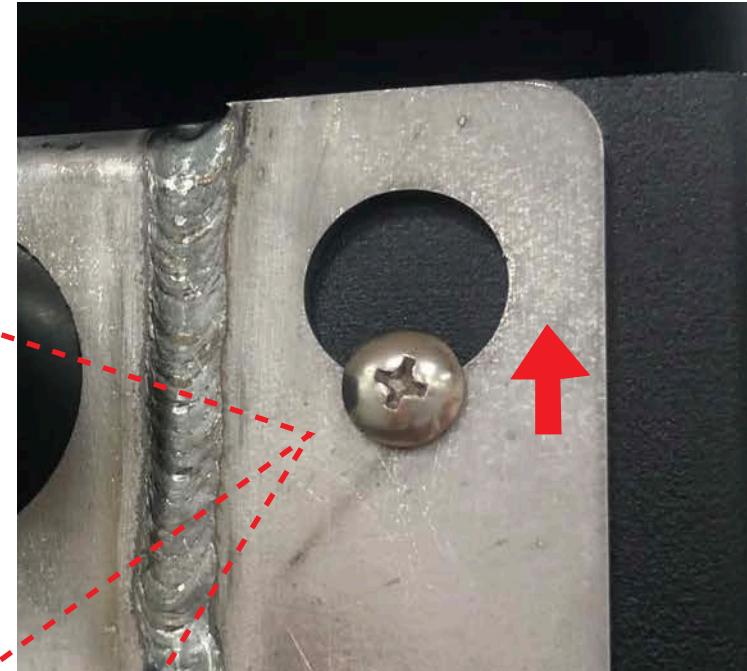
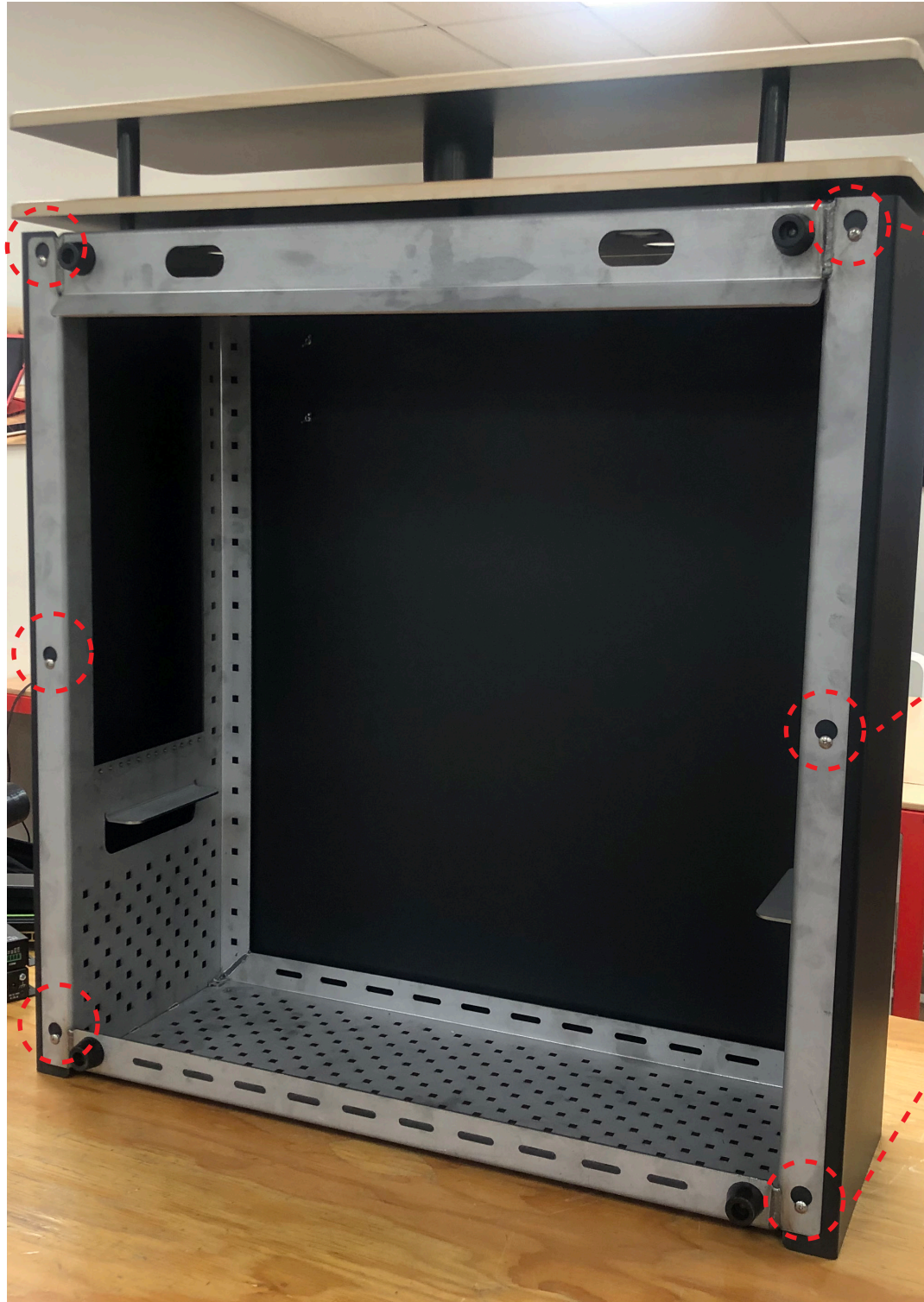
Front view



Rear view

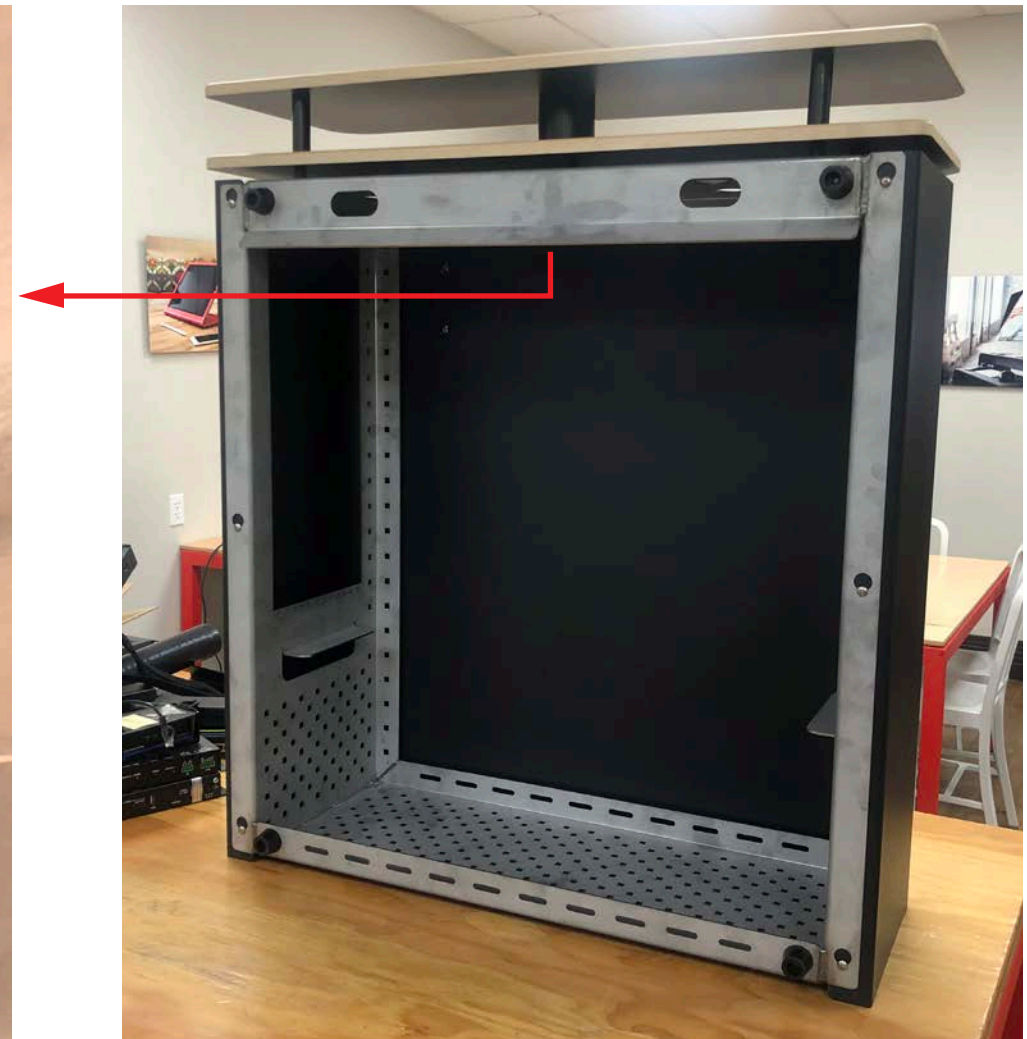


1. To remove the Credenza's front panel, carefully lift up on the panel until all six screw heads are free from the keyholes.



Note the mounting positions for two optional exhaust fans.

Heckler recommends AC INFINITY Multifan S5, Dual 80MM.
More information, go [here](#).

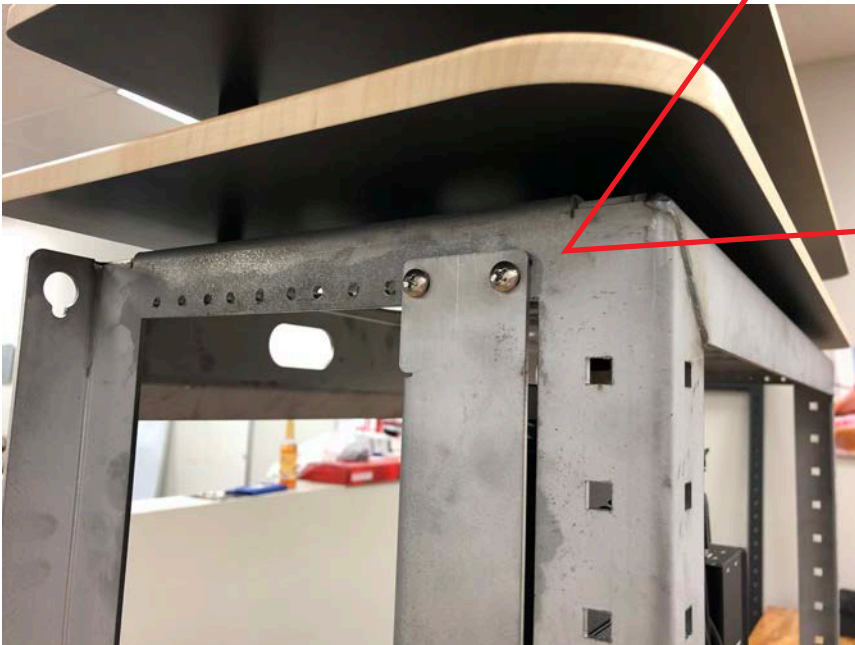


2. Install Crestron UC Engine to the 1U mounting bracket with screws provided.



3. Upright the credenza body on the countertop with a comfortable height and configure the equipment in the “standing” mode.

Install Crestron UC Engine with the bracket to the credenza with screws provided.



4. Install all other rackmount equipment.



5. Strap large, non-rackmount equipment to a standard 1U rack shelf (not included), and install into the credenza.

Heckler recommends AC Infinity Vented Cantilever 1U Universal Rack Shelf.

For more information, go [here](#).



6. Strap and zip tie small devices, power adapters, and cabling atop the bottom shelf.



Cut the Velcro provided to desired lengths.

Pass the velcro strap through the pill shapes to anchor down the small gear.

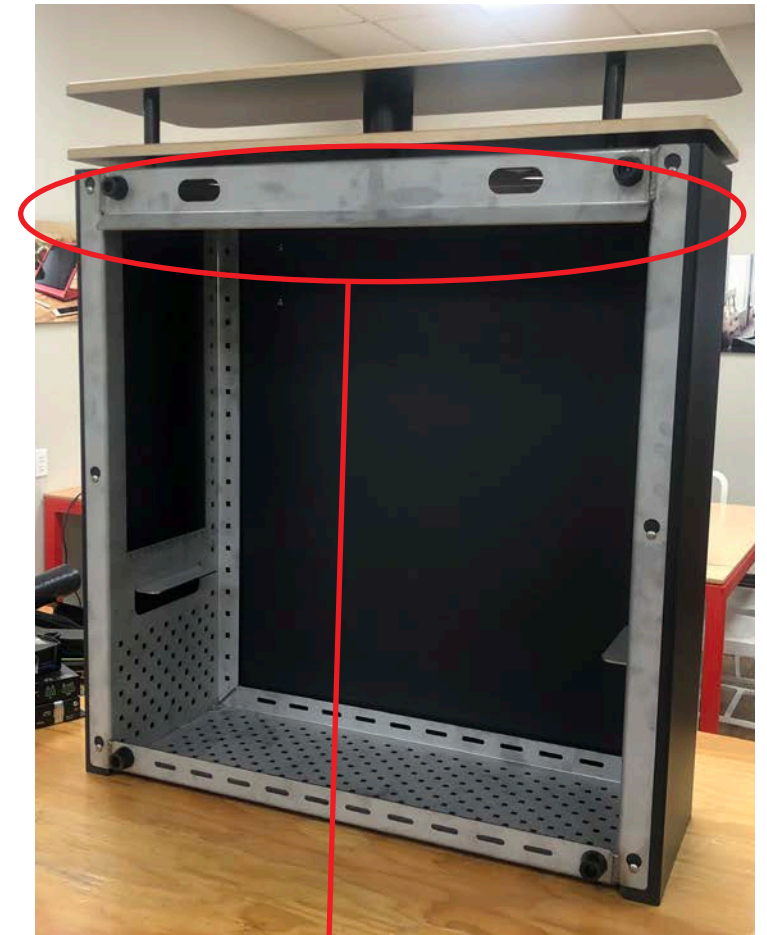
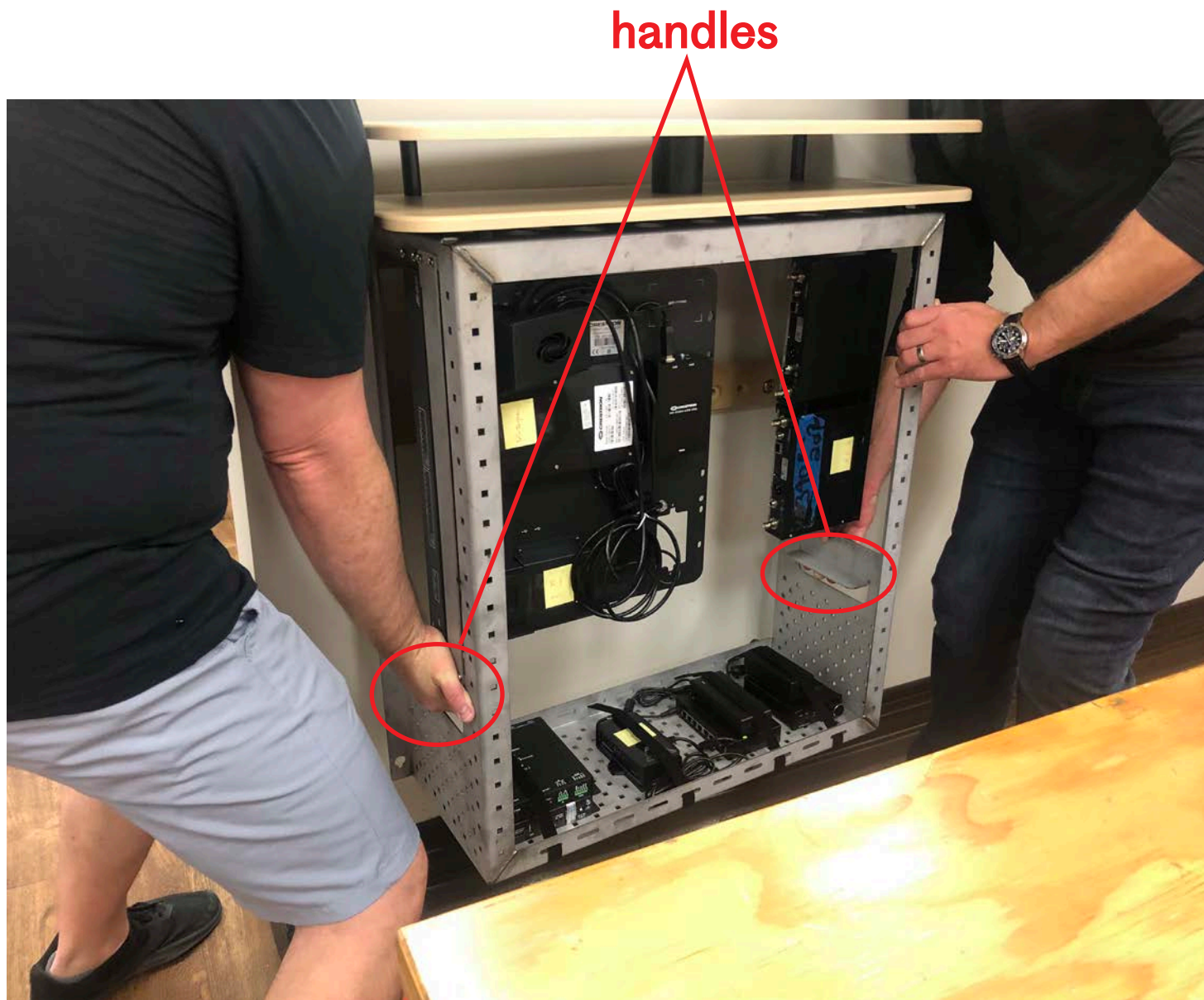


Anchor cables to the vertical structure with the zipties provided.



Step 3 : Install the credenza onto the wall.

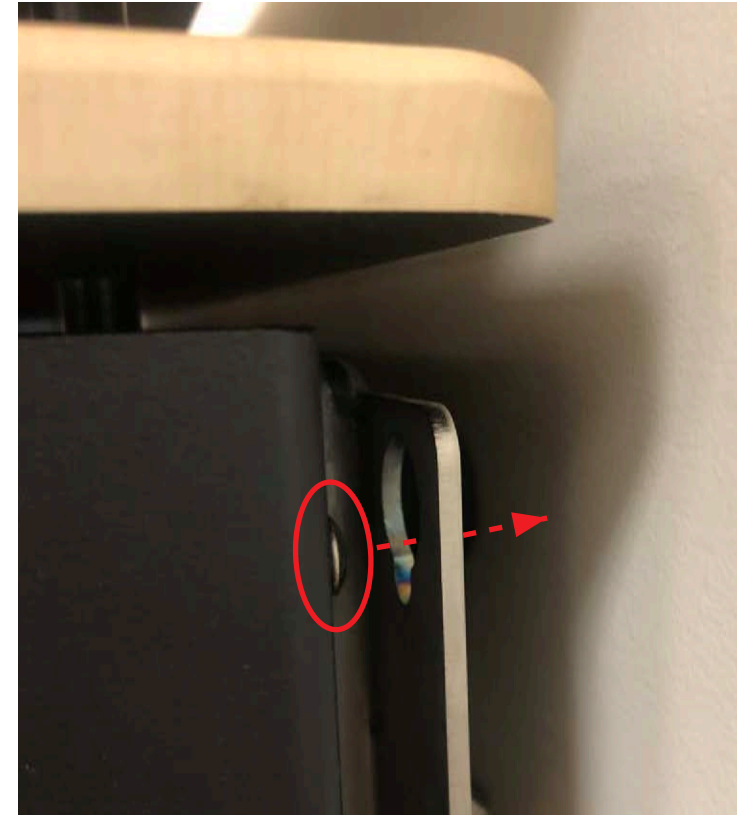
With two people, use the integrated handle positions to carefully hang the Credenza on the French cleat.



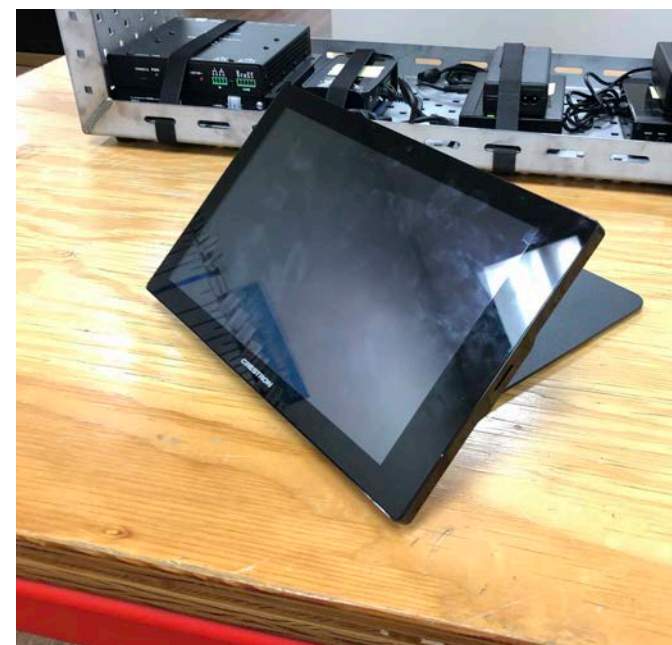
Install the front panel.



Make sure all six screws on the panel sit firmly in the keyhole slots on the body.



Step 4 : Install the touchscreen bracket



Step 5 : Place the blu-ray player on the lower shelf.

