

Heckler

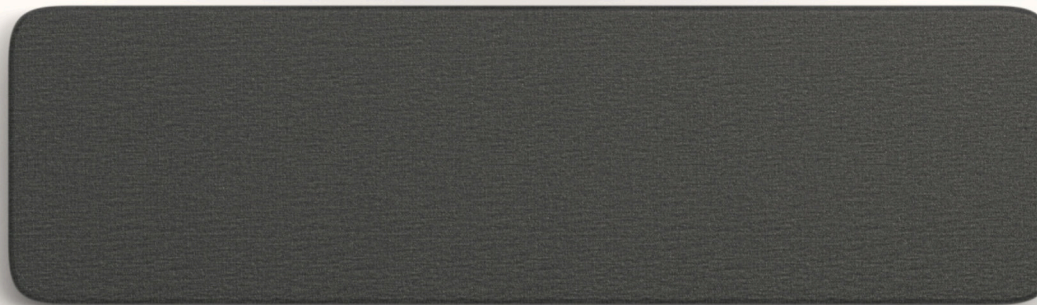
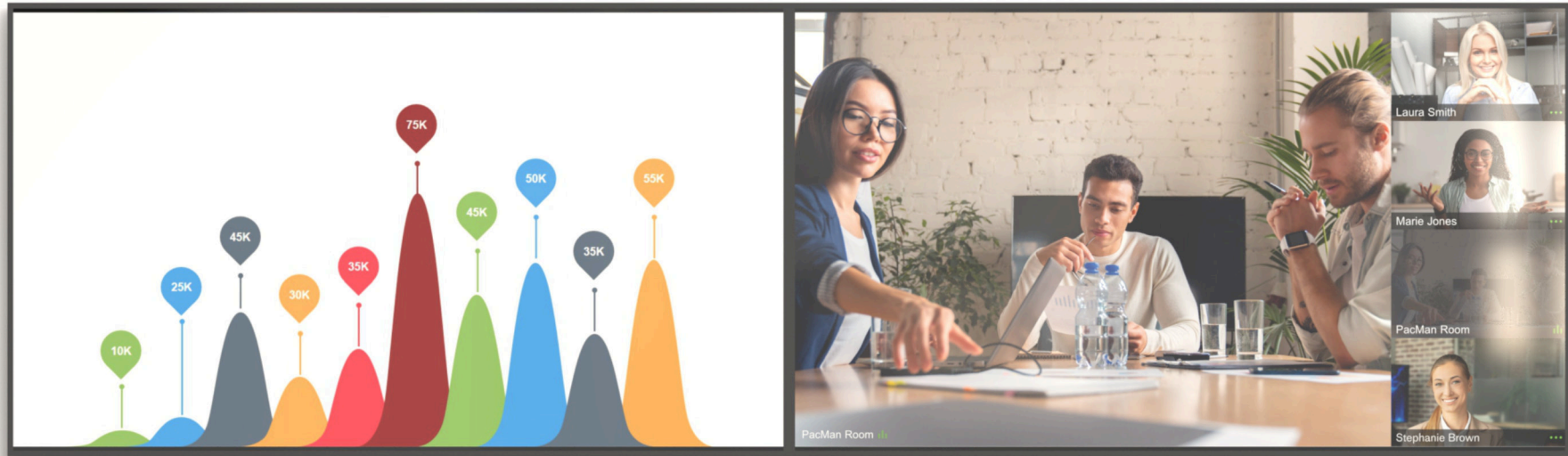
A simple solution for accessibility.



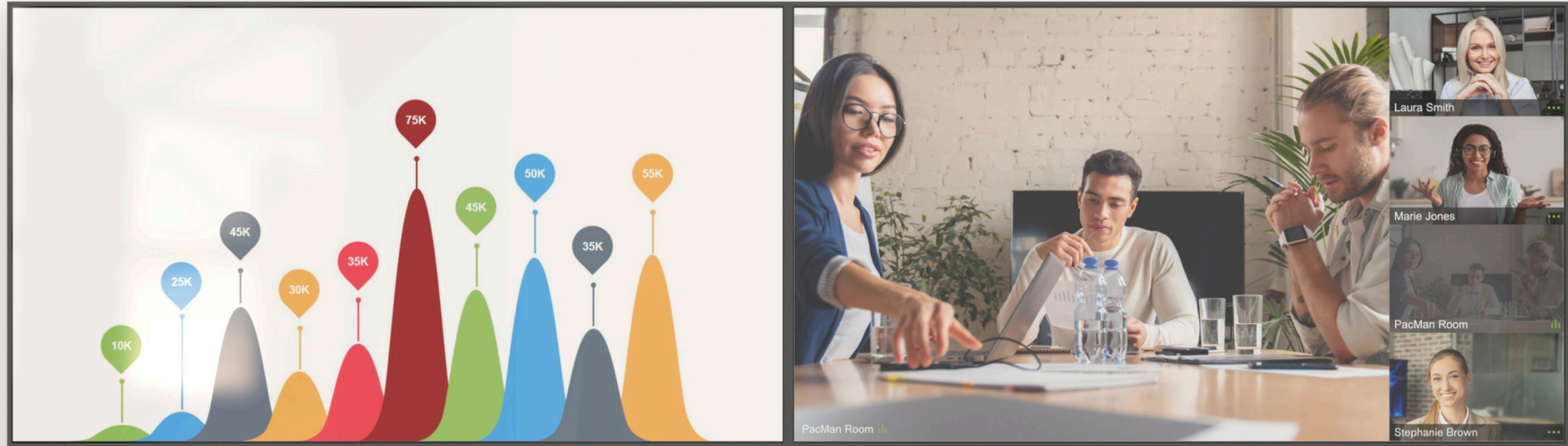
Heckler ADA Panel Pair 20x20
H808



Only one panel from the pair is shown.



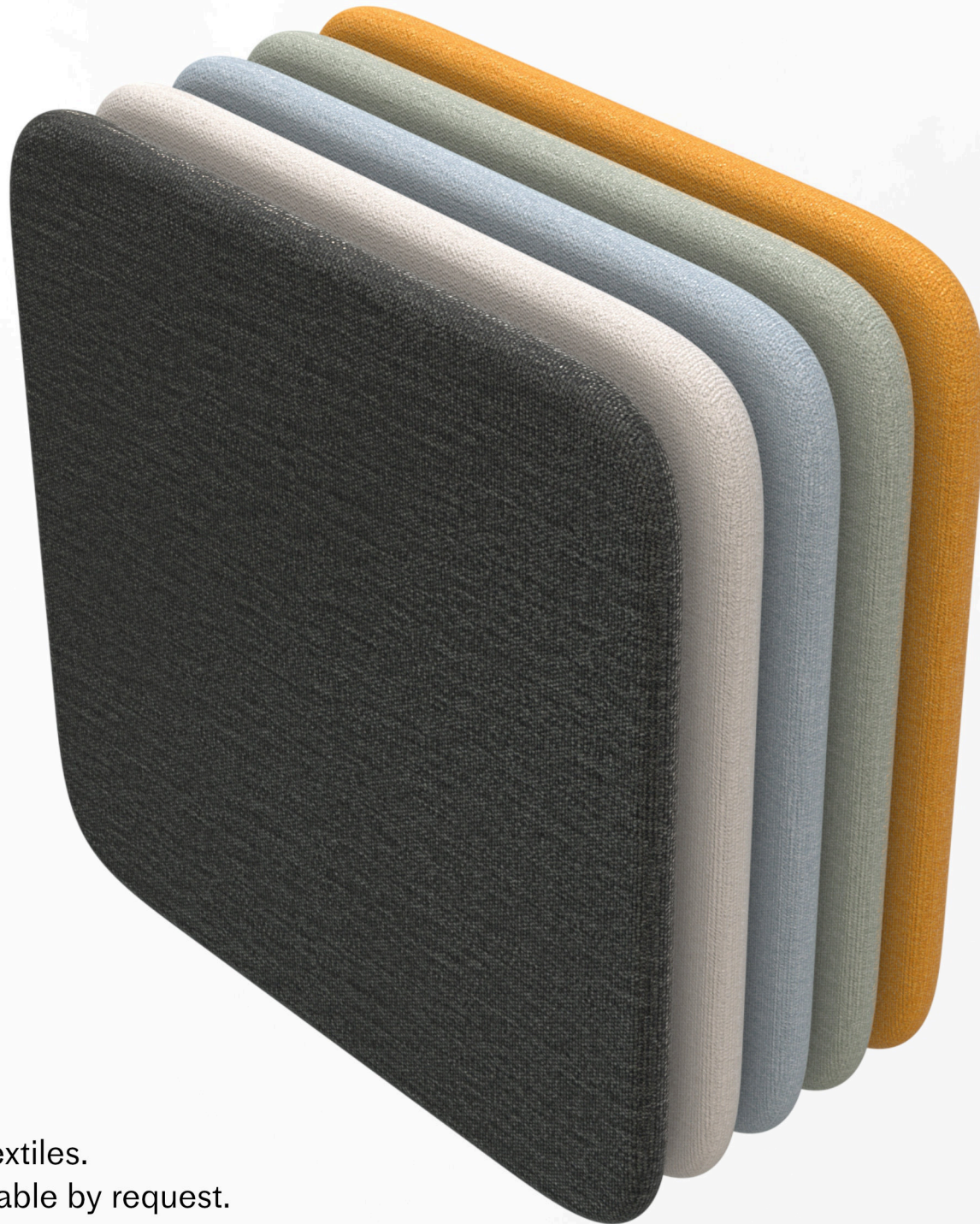
Shown in combination with H809 Heckler ADA Panel 68x20. Sold separately.



Multiple panel pairs can be combined to redefine the guide path for any video meeting wall.



Enables objects mounted above the panel to protrude off the wall up to seven inches.



Available in five stock Maharam textiles.
Additional textile options are available by request.

Heckler

Designing ADA-compliant meeting spaces while delivering a first-class experience can be a complex challenge. Heckler ADA Panels offer a seamless solution—combining accessibility, simplicity, and modern design to enhance any meeting space with style.

Features

Provides a tactile guide for individuals using a hand or cane, helping them safely navigate the perimeter of your space and avoid collisions with displays and wall-mounted equipment.

Sculpted front panel, wrapped in premium Maharam fabric.

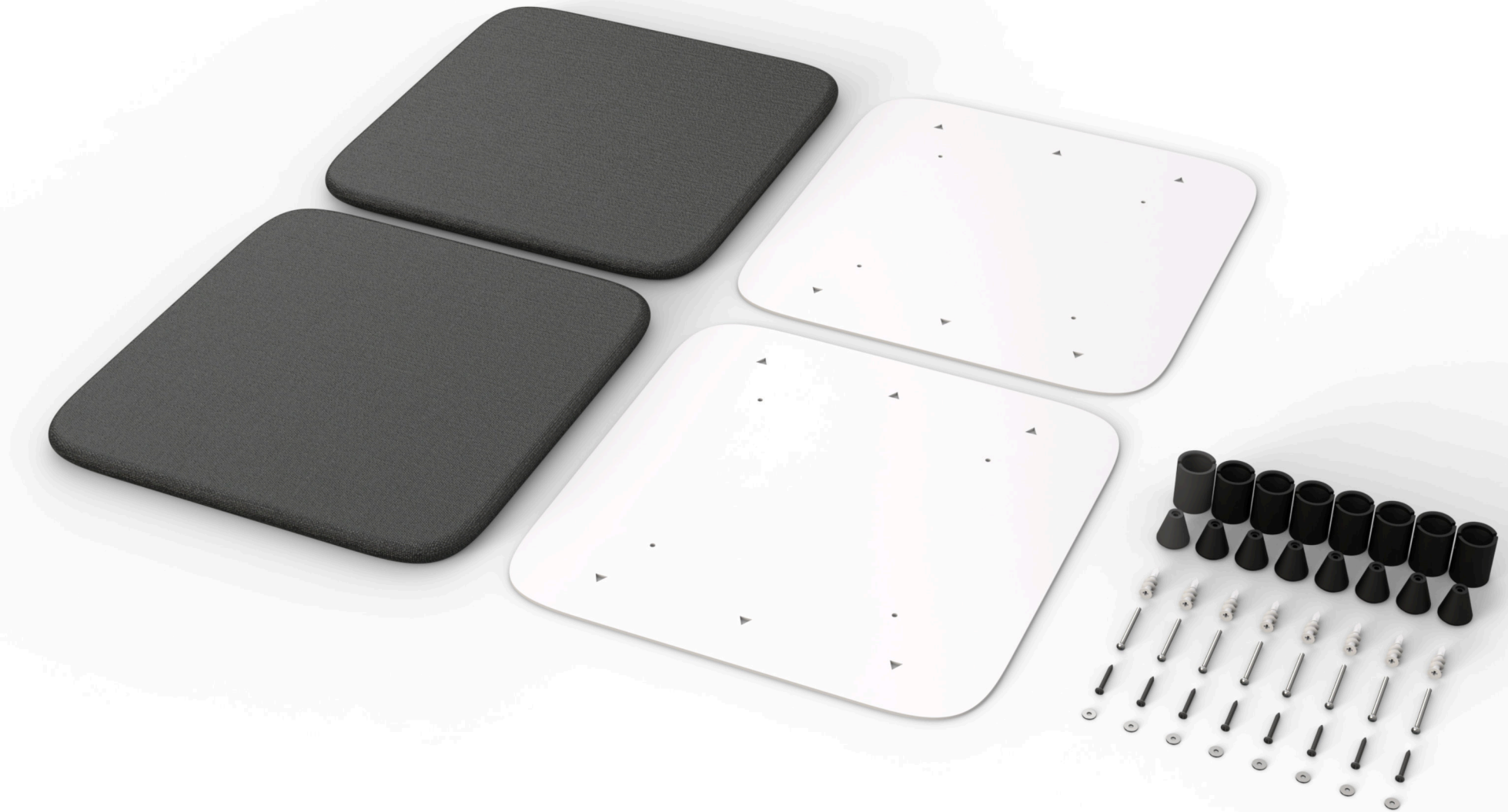
Adds three additional inches to your guide path, enabling your displays and video meeting gear directly above each ADA Panel to protrude off your wall up to seven inches.

Installs in minutes, with common tool. Mounting templates are included.

Install multiple panels to solve accessibility issues for any video meeting wall.



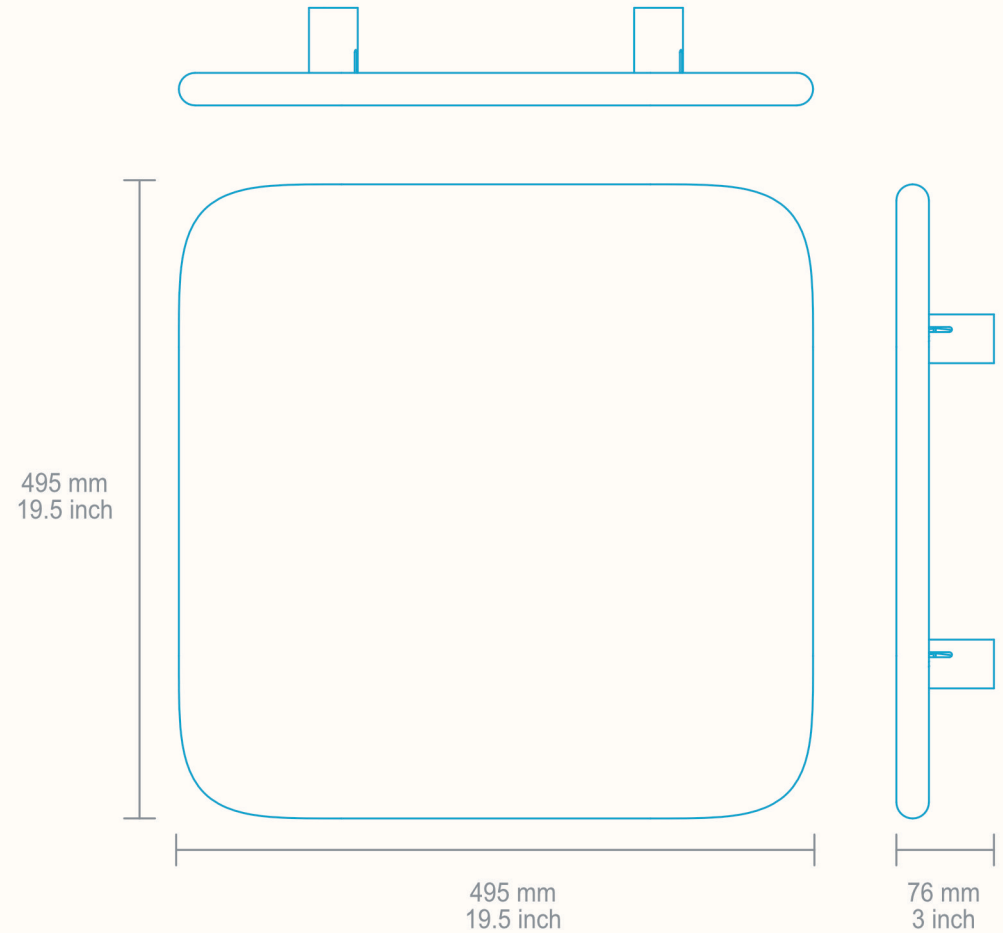
In the box



Heckler

Specifications

SKU and Color	H808-BG Black Grey H808-OW Off White H808-BL Blue H808-GN Green H808-HY Honey
Warranty	Two years
Product Dimension	19.5 x 19.5 x 3 inches (495 x 495 x 76 mm)
Product Weight	8.5 lbs (3.9 kg)
Shipping Dimension	22 x 22 x 3 inches (559 x 559 x 51 mm)
Shipping Weight	10 lbs (4.6 kg)
Material	ASA High-density Urethane (HDU) Front Panel wrapped with polyester fabric
Country of Origin	US
Compatibility	Designed to be installed at a height which sets some portion of the panel at 27 inches AFF to modify your room's guide path. Install ADA Panels directly under displays and other wall-mounted objects, enabling those objects to protrude up to 7 inches from the wall.
In the box	ADA Panel Pair 20x20 Installation templates Drywall anchors and screws Panel-mounting hardware



For more information, contact
Heckler or your favorite Heckler
Authorized Dealer.

heckler.com
sales@hecklerdesign.com
(844) 432-5930