

Heckler

**Easily deploy  
extra large  
displays.**



XL Display Kit for Heckler AV Wall  
H824

# Heckler

Today's most exciting displays feature wider aspect ratios and massive screen sizes, creating amazing video meeting experiences and all new mounting challenges. Combine XL Display Kit with Heckler AV Wall Structure to support heavy displays with the floor, not the wall.

## Features

Commercial grade steel structure.

Scratch-resistant and fingerprint-resistant powdercoat finish.

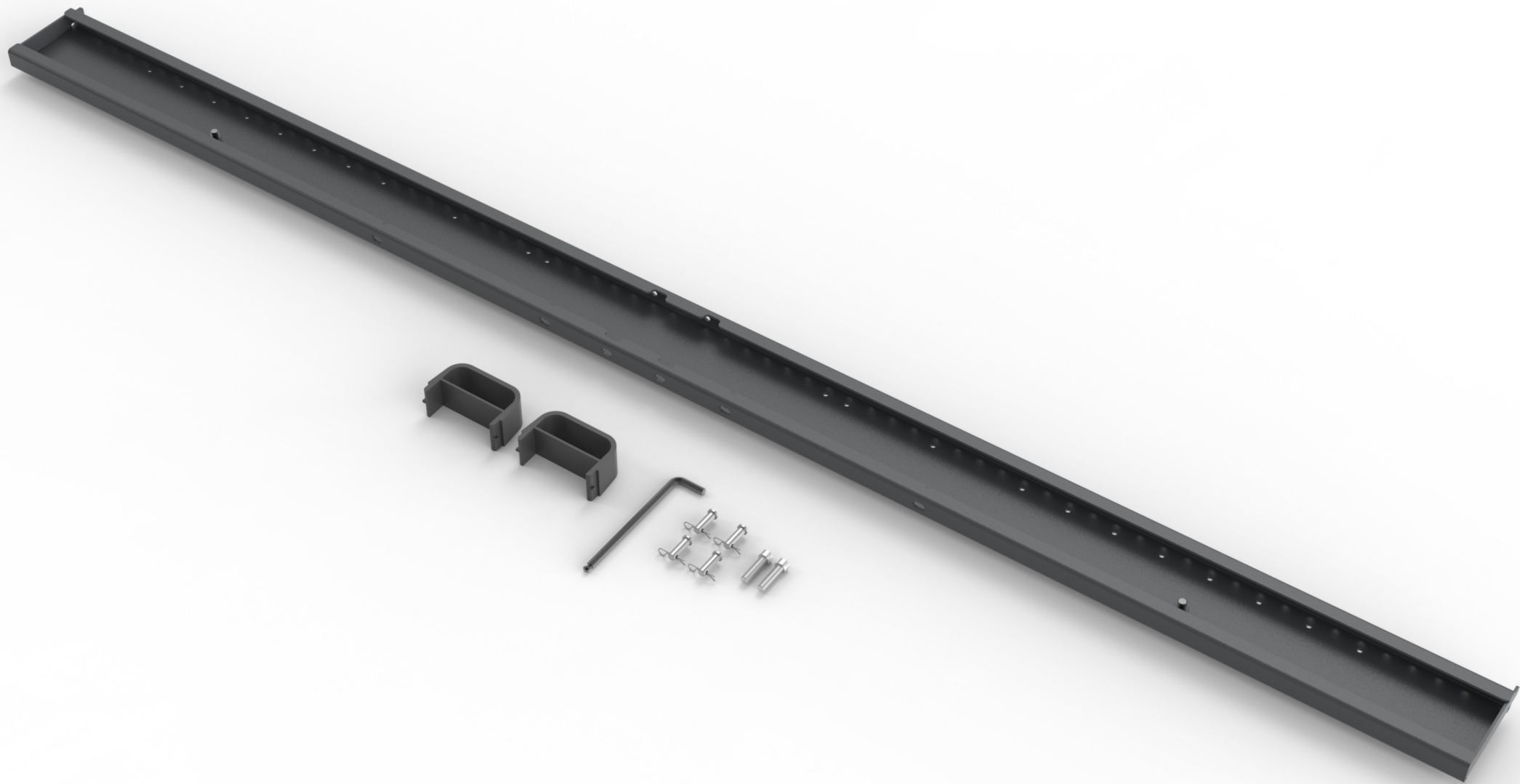
Easy assembly.

Mounts atop H800 Heckler AV Wall Structure.

Supports single displays up to 325 pounds.

Supports displays with VESA 350, 400, 600, 800, 900, 1000, 1100, 1200, 1300, 1400, and 1500mm horizontal mounting positions.



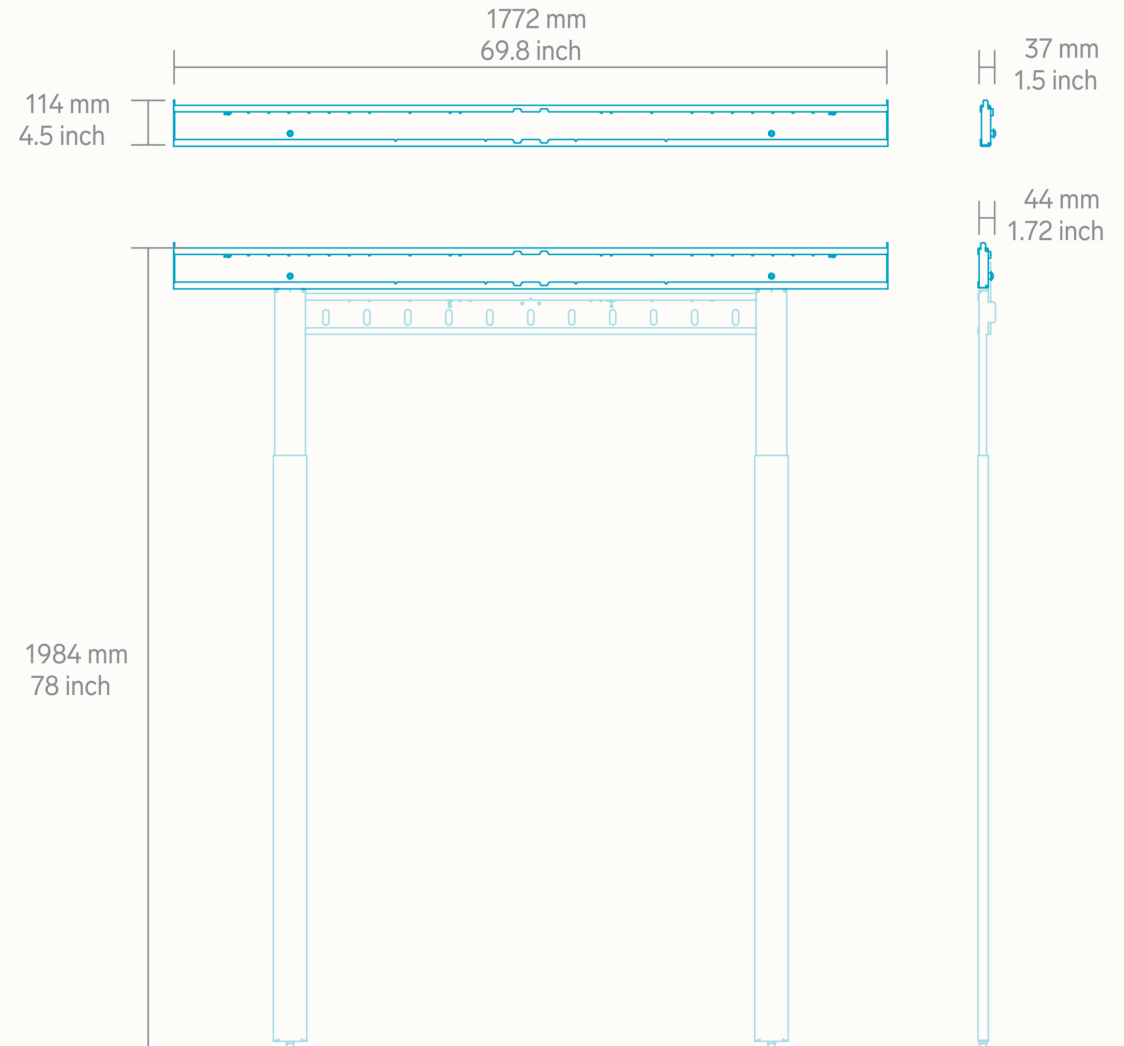


# Heckler

## Specifications

SKU	H824
Color	Black Grey (BG)
Warranty	Two years
Product Dimension	69.8 x 4.5 x 1.5 inches (1772 x 114 x 37 mm)
Product Weight	14 lbs (6.4 kg)
Shipping Dimension	75 x 9 x 2 inches (1905 x 229 x 51 mm)
Shipping Weight	19 lbs (8.6 kg)
Material	Powdercoated Steel
Country of Origin	US
Compatibility	Single displays up to 325 lbs.  Single displays with VESA 350, 400, 600, 800, 900, 1000, 1100, 1200, 1300, 1400, and 1500mm horizontal mounting positions.  Recommended for use only with display enclosures greater than 70 inches wide so to not reveal the mounting hardware.
In the box	XL Display Crossbar Bumper Brackets Set Assembly hardware

Display height range will differ by the size of display, its VESA pattern, and relative location of mounting holes. For an 105-inch, 21:9 aspect display with a centered VESA pattern, at the lowest position, its vertical center line will be approximately 62.3" AFF, with its lower edge being approximately 40.6" AFF. At the highest position, its vertical center line will be approximately 79" AFF, with its lower edge being approximately 57.2" AFF.



**For more information, contact  
Heckler or your favorite Heckler  
Authorized Dealer.**

**hecklerdesign.com  
sales@hecklerdesign.com  
(844) 432-5930**