

Heckler

A New Angle For Logitech Tap

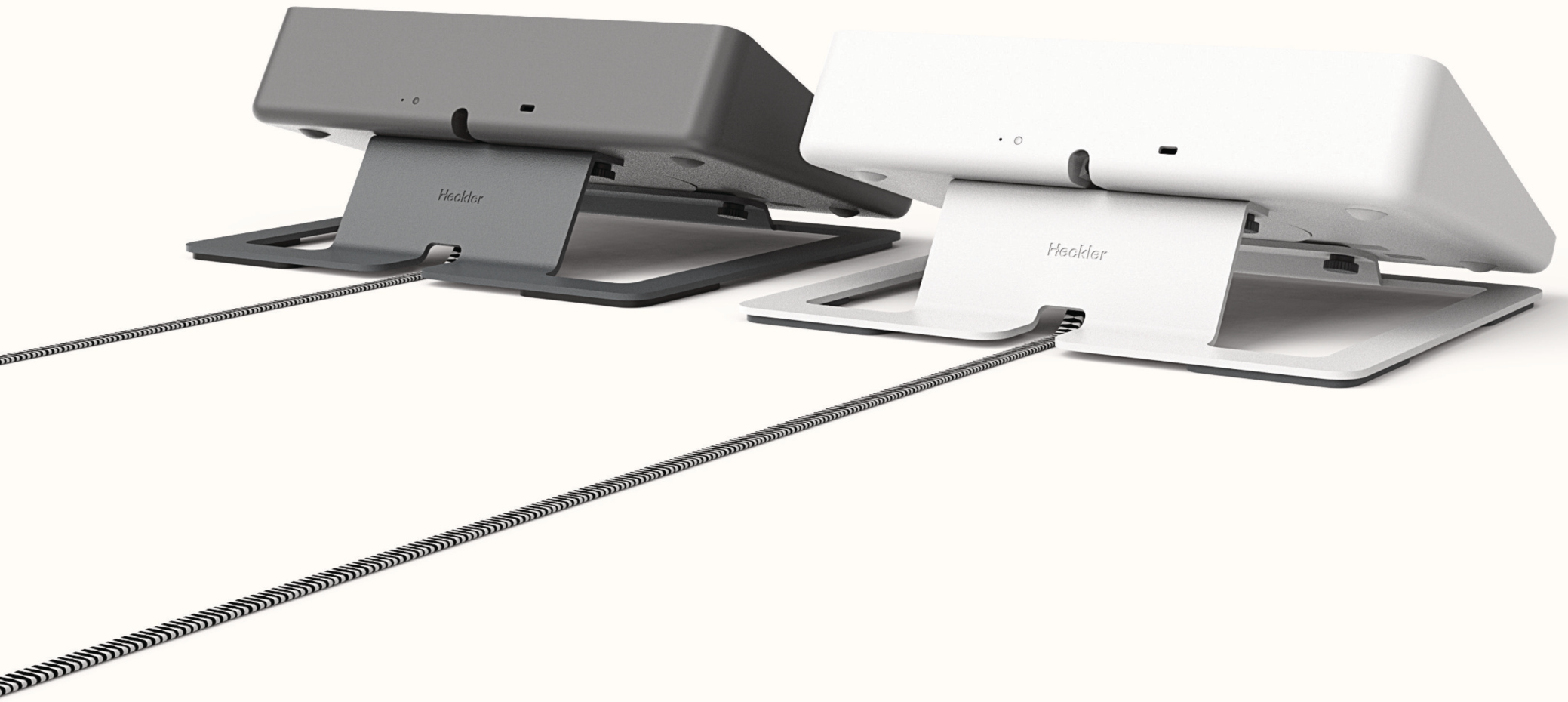


Stand for Logitech Tap
H660

Heckler



Heckler



Heckler

Features

Rigid steel structure with scratch-resistant and fingerprint-resistant powdercoat finish.

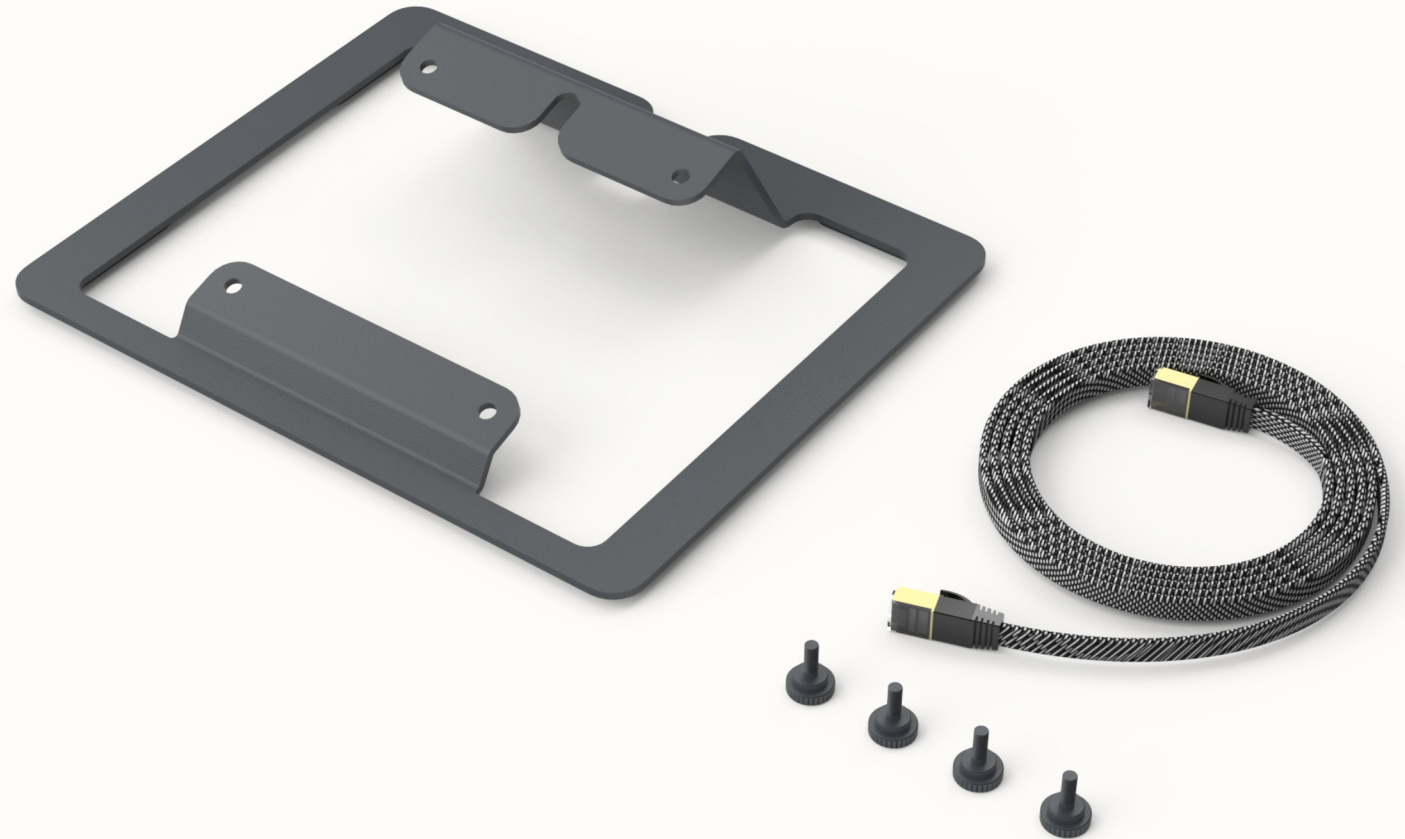
Creates a 16-degree lift, placing Tap's screen 30-degrees from your table tops.

Tool-less installation.

Rubber-lined feet.

Compatible with Logitech Tap, Tap IP and Tap Scheduler.

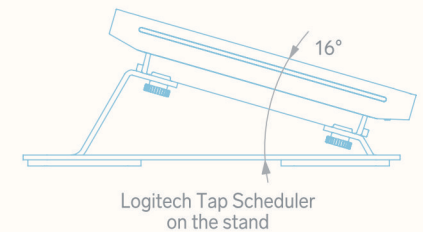
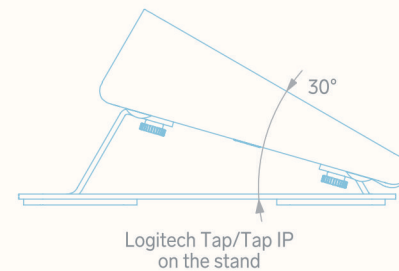
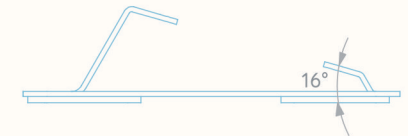
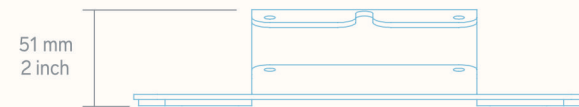
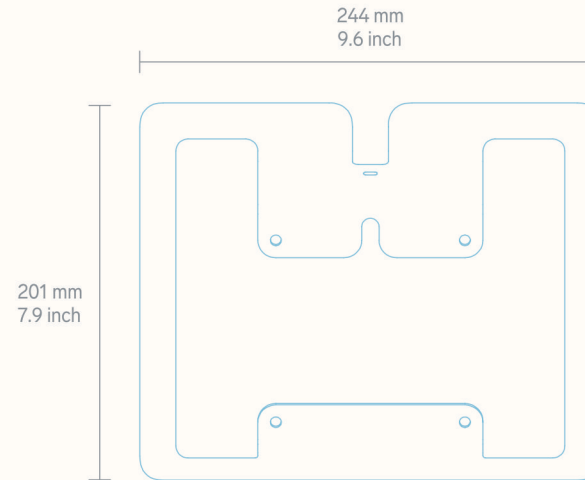
Available in both Black Grey and White to match your device.



Heckler

Specifications

SKU	H660
Color	Black Grey (BG) White (WT)
Warranty	2 years
Product Dimension	9.6 x 7.9 x 2 inches (244 x 201 x 51 mm)
Product Weight	1.5 lbs (0.68 kg)
Shipping Dimension	12 x 10 x 4 inches (305 x 254 x 102 mm)
Shipping Weight	2.5 lbs (1.1 kg)
Material	Powdercoated Steel
Country of Origin	US
Compatibility	Logitech Tap Logitech Tap IP Logitech Tap Scheduler
In the box	Stand for Logitech Tap Assembly Thumbscrews CAT 6 Nylon Braided Ethernet Cable, 5 meter



For more information, contact
Heckler or your favorite Heckler
Authorized Dealer.

hecklerdesign.com
sales@hecklerdesign.com
(844) 432-5930