

H701 - Dual Display Kit for Heckler AV Cart

Supports two displays up to 75 inches each, up to VESA 600 (horizontal) mounting pattern, and up to 300 pounds of total display weight.

Smaller displays with alternative VESA patterns are supported.

To reduce the risk of severe injury or death to persons, or damage to equipment, review these installation safety steps before proceeding:

1. One person should stabilize the cart while two additional people mount the displays to prevent lateral tipping.
2. Caster brakes should be applied during the installation of Dual Display Kit and while mounting each display.
3. Do not over-tighten the wingnuts when mounting the displays.
4. Do not exceed 150 pounds per display.
5. Do not exceed 300 pounds of total display weight.
6. Both displays should share the same make, model, and weight.
7. Whenever a dual-display cart is rolled, two people should guide the cart to prevent wall and doorframe collisions, and tripping on sidewalk expansion joints.

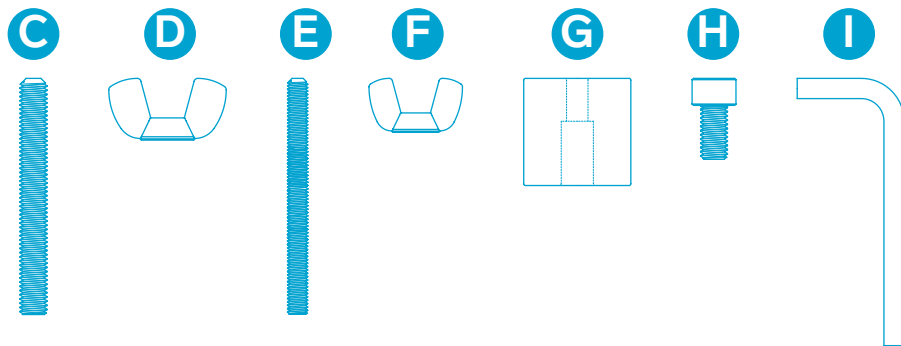
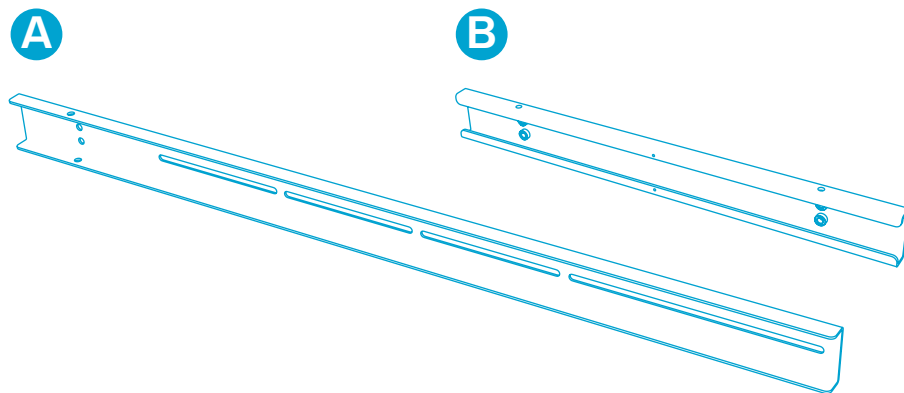
If you have any questions, please contact Heckler.

service@hecklerdesign.com

844-432-5930

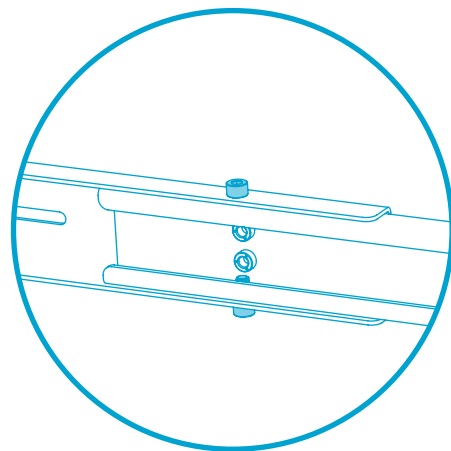
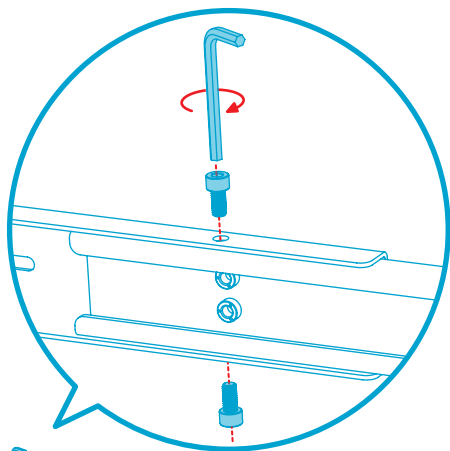
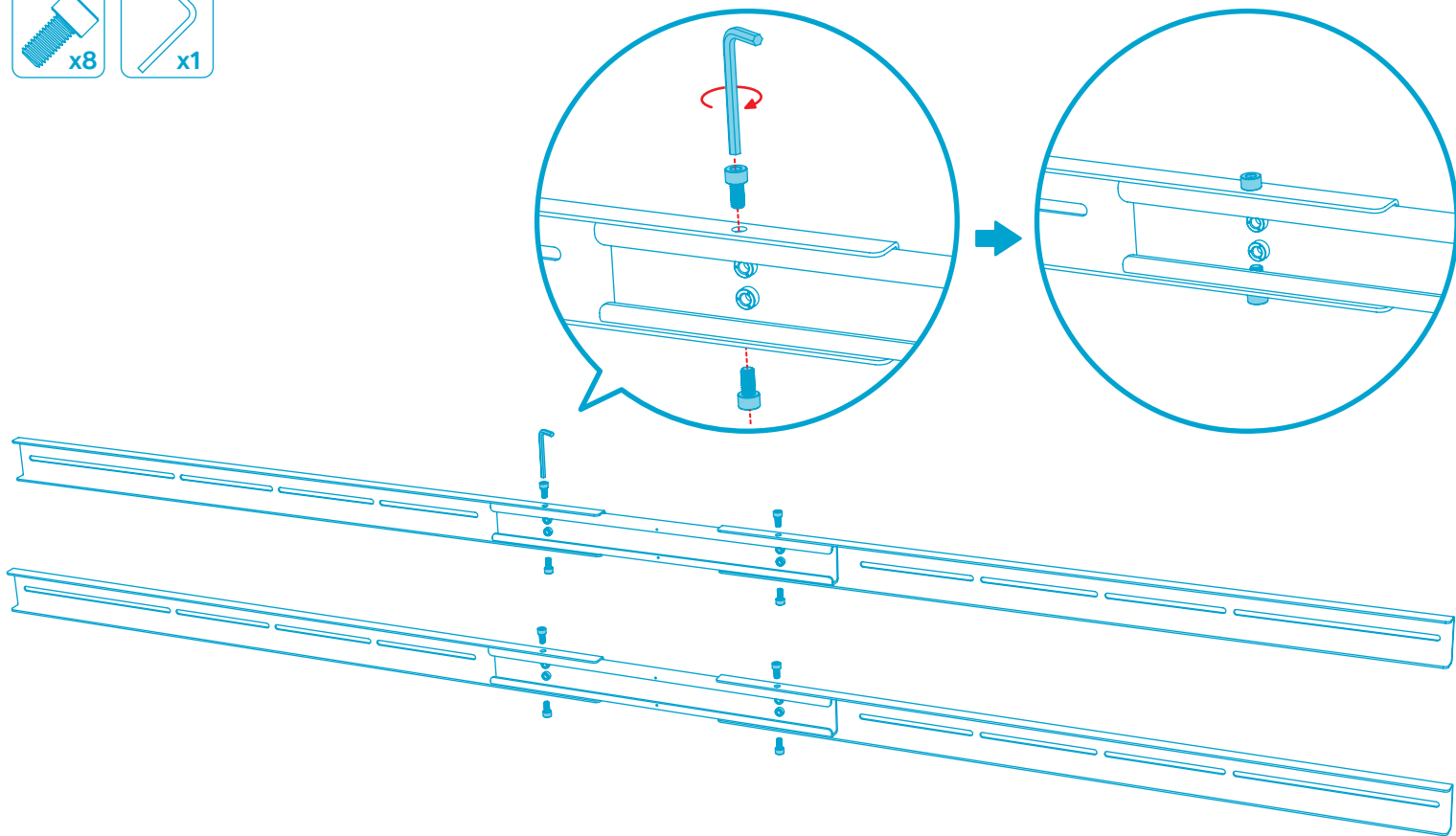
IN THE BOX

- A** 4 x Outer Bracket
- B** 2 x Center Bracket
- C** 4 x Set Screw, M8, 70mm
- D** 4 x Wingnut, M8
- E** 4 x Set Screw, M6, 70mm
- F** 4 x Wingnut, M6
- G** 4 x Rubber Spacer
- H** 16 x Socket Head Screw, M8, 16mm
- I** 1 x Assembly Key, Hex, 6mm



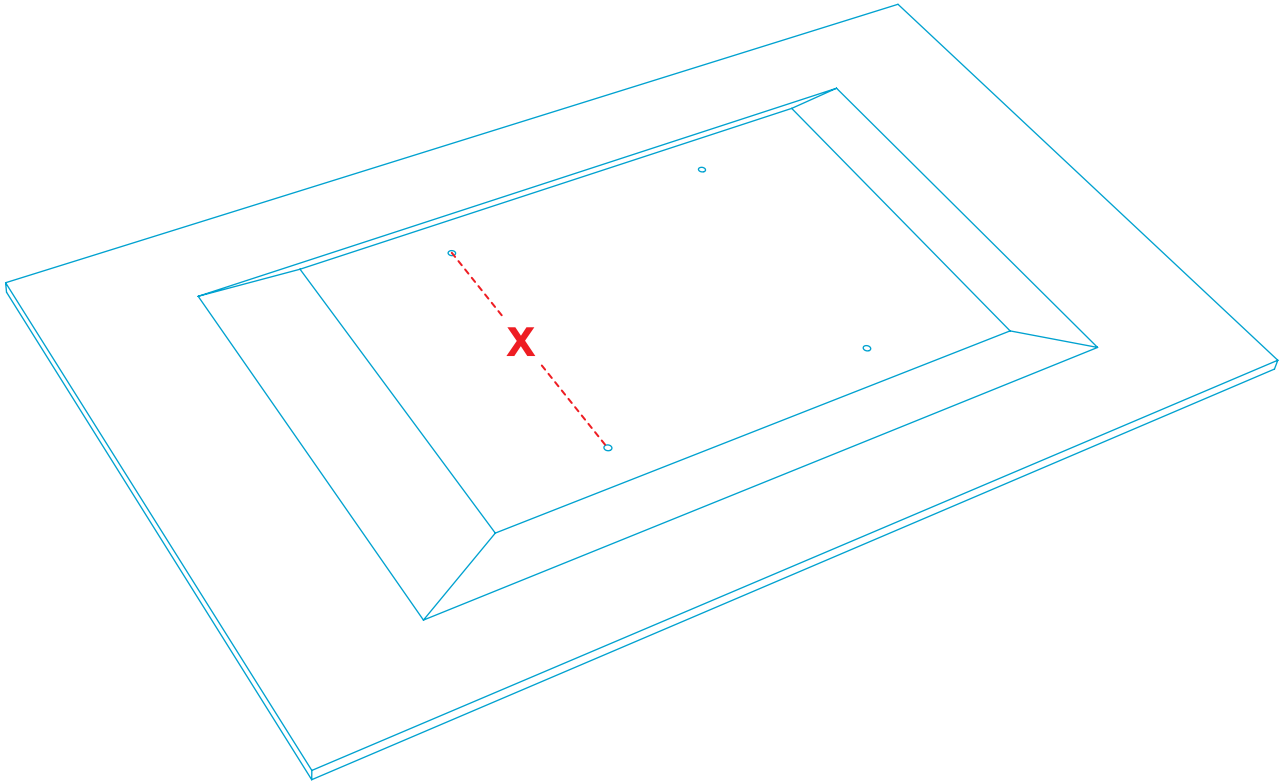
STEP 1

Assemble Outer Brackets to Center Brackets.



STEP 2

Determine whether your display has M8 or M6 mounting holes.
Measure the vertical distance between mounting holes.



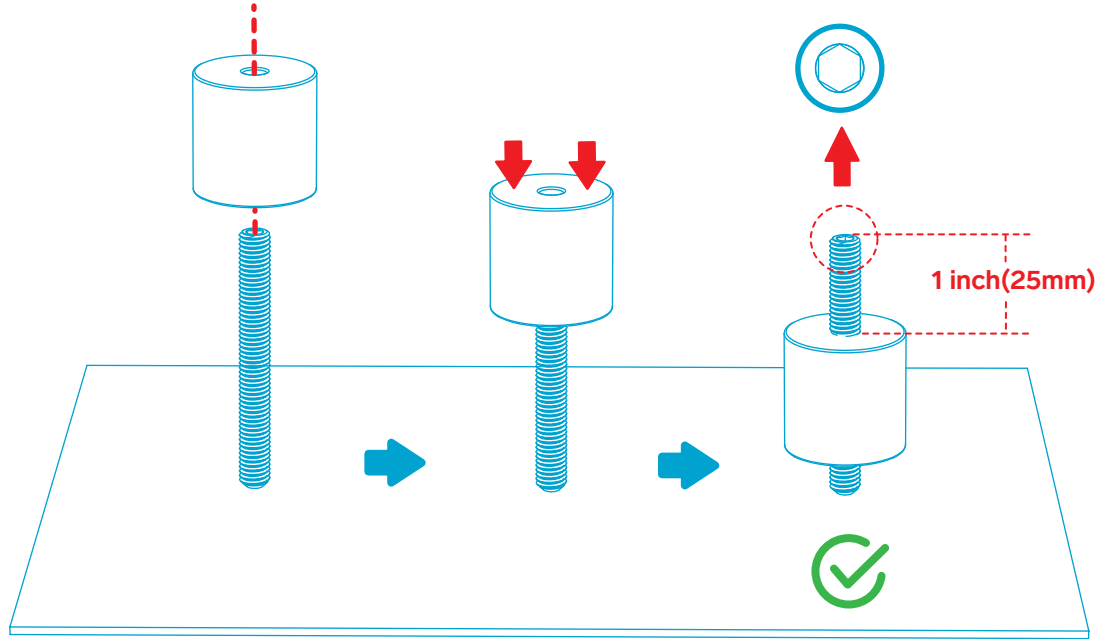
STEP 3

Prepare the display-mounting hardware.
Insert the M6 or M8 set screws through the rubber spacers.
Position the set screw relative to the spacer as shown.



Important note:
Dual Display Kit includes mounting hardware for your second display. The mounting hardware for your first display is included with Heckler AV Cart.

The set screws are a tight fit. To push the set screw into the spacer, place cardboard on a solid surface then slowly and carefully push the spacer onto the set screw.



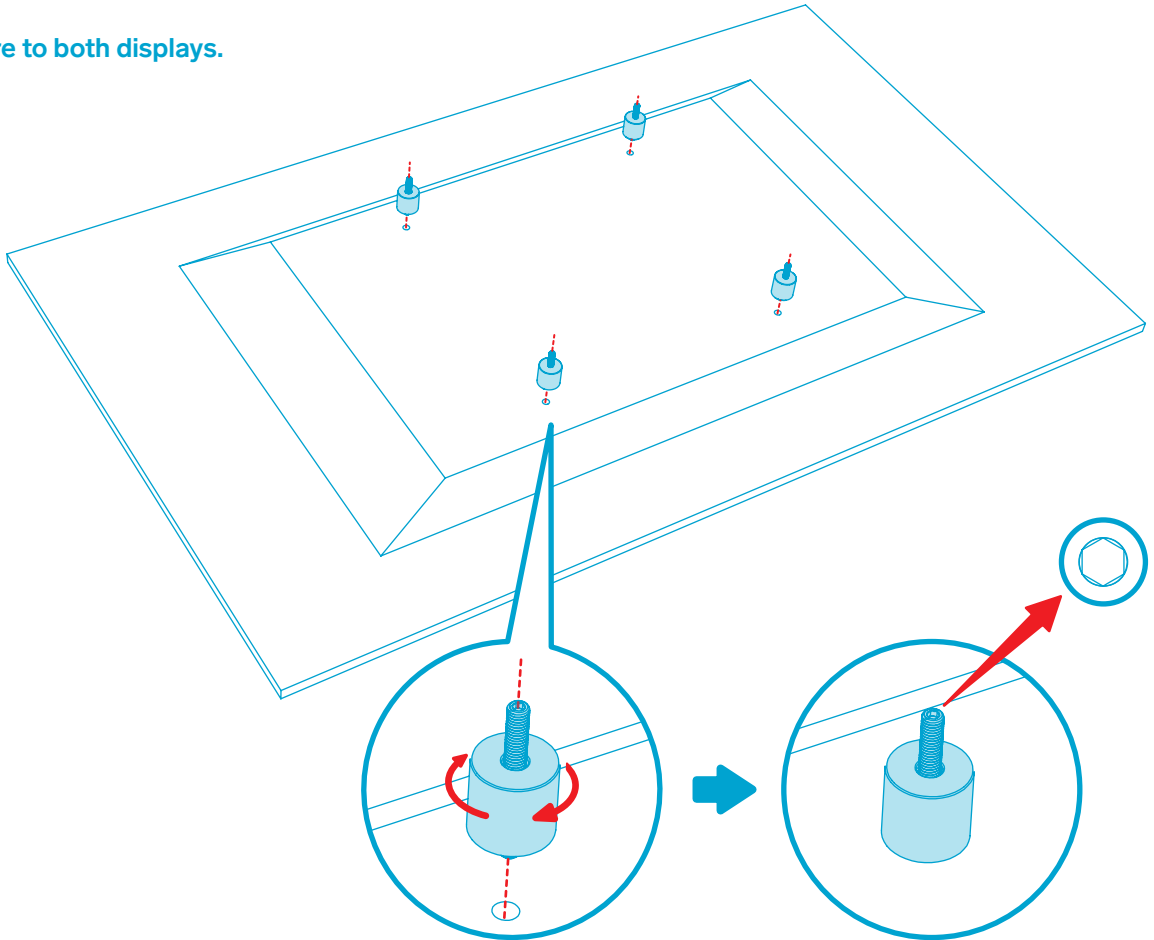
STEP 4

Fasten the mounting hardware to both displays.



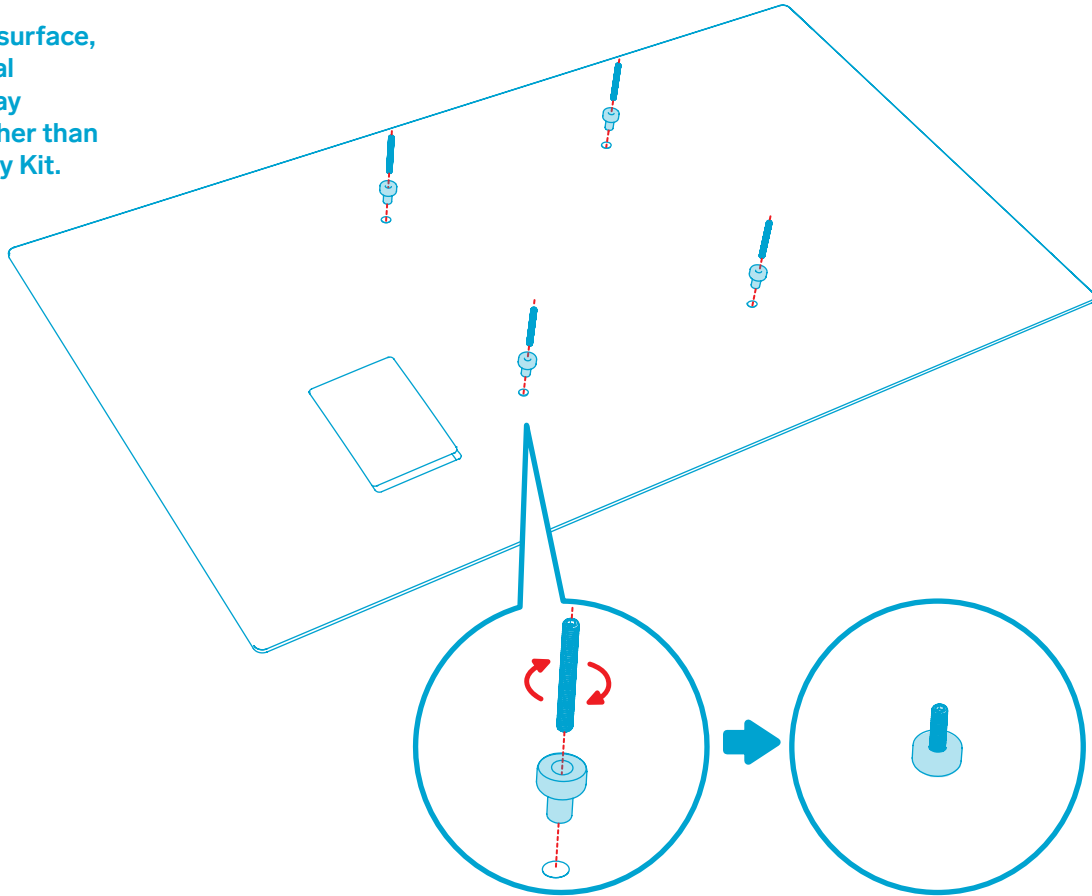
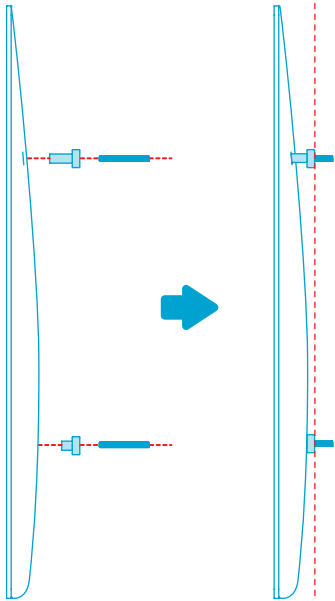
Important notes:

1. Fasten the set screw into the display at the depth recommended by the display manufacturer. Do not overtighten these mounting screws.
2. Ensure the spacers rest snugly against the rear surface of the display.
3. The hex drive of each set screw should face away from the display.



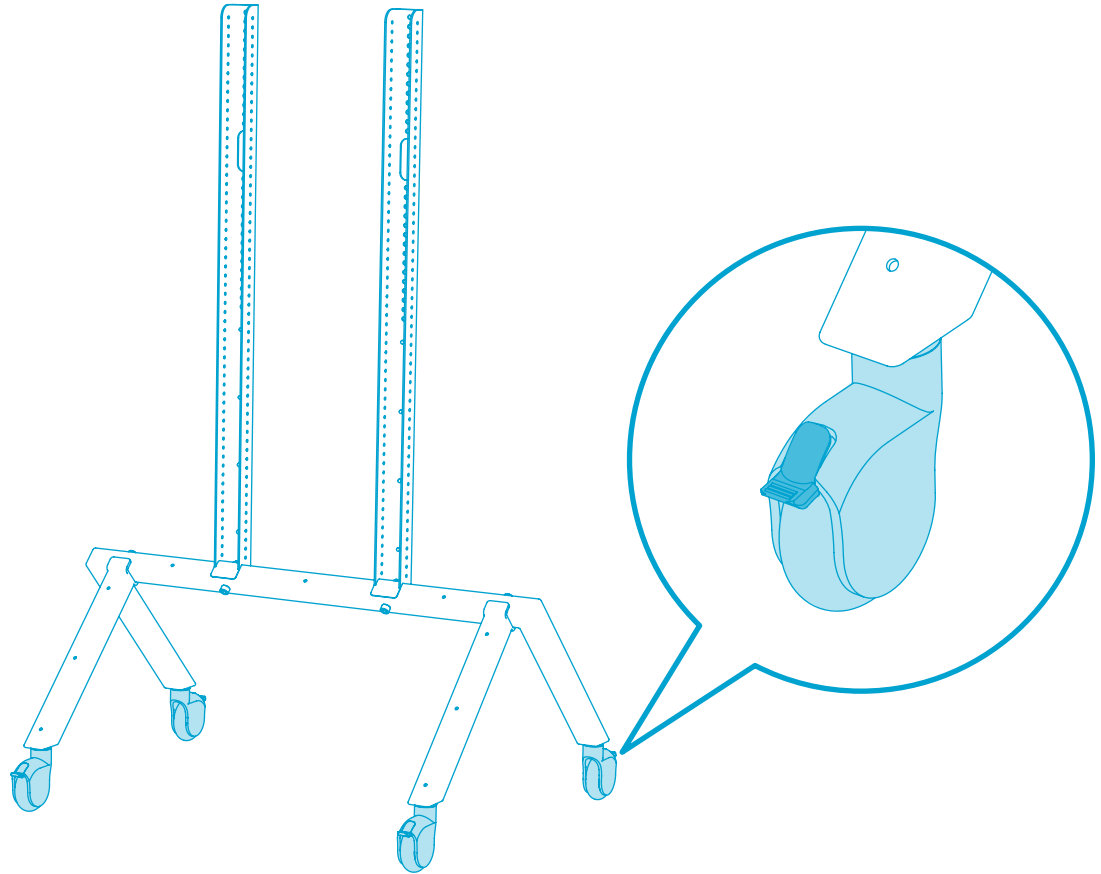
Note

If your displays feature a curved rear surface, the displays likely shipped with special mounting spacers. If so, use the display manufacturer's mounting spacers rather than the spacers included with Dual Display Kit.



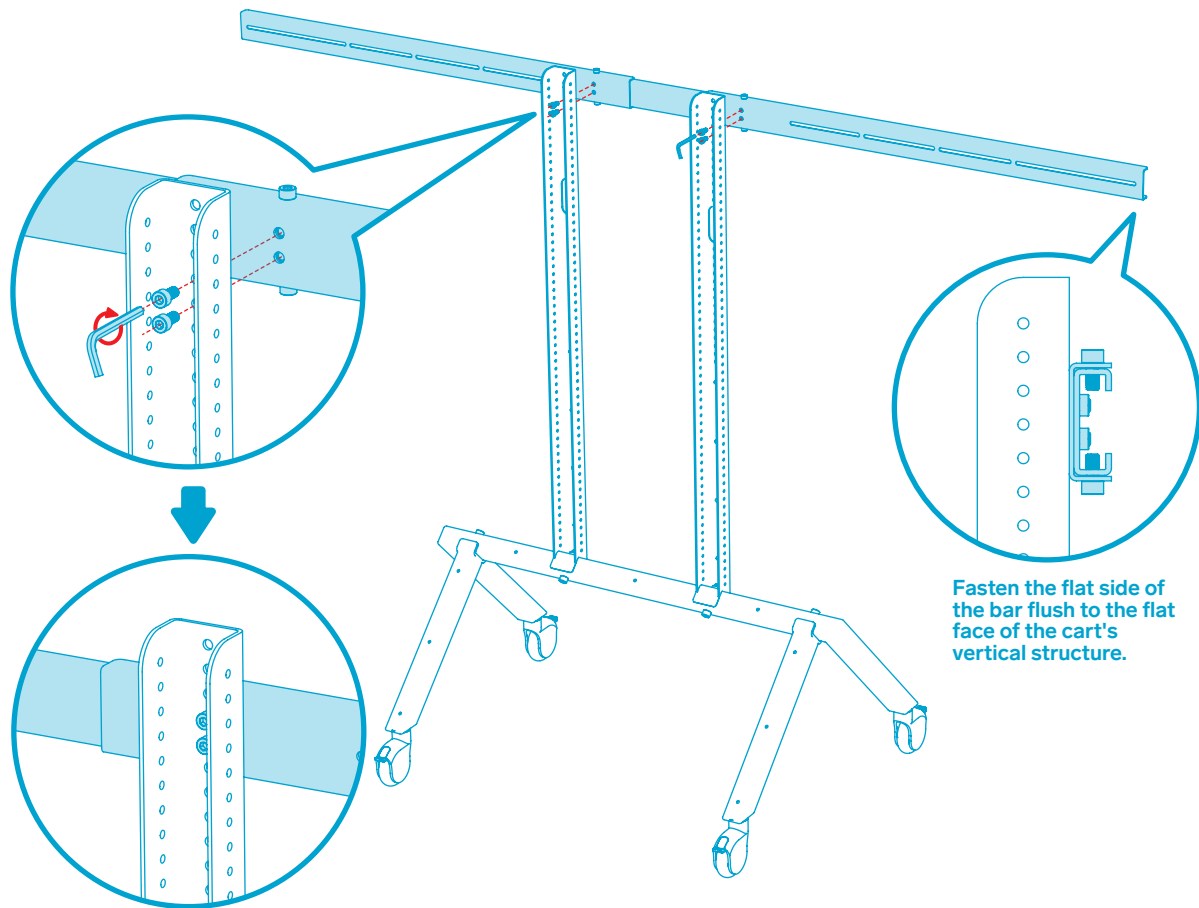
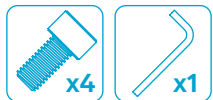
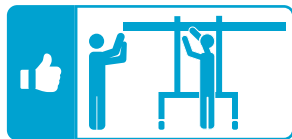
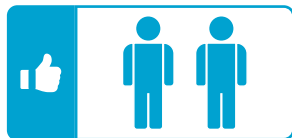
STEP 5

Engage all caster brakes.



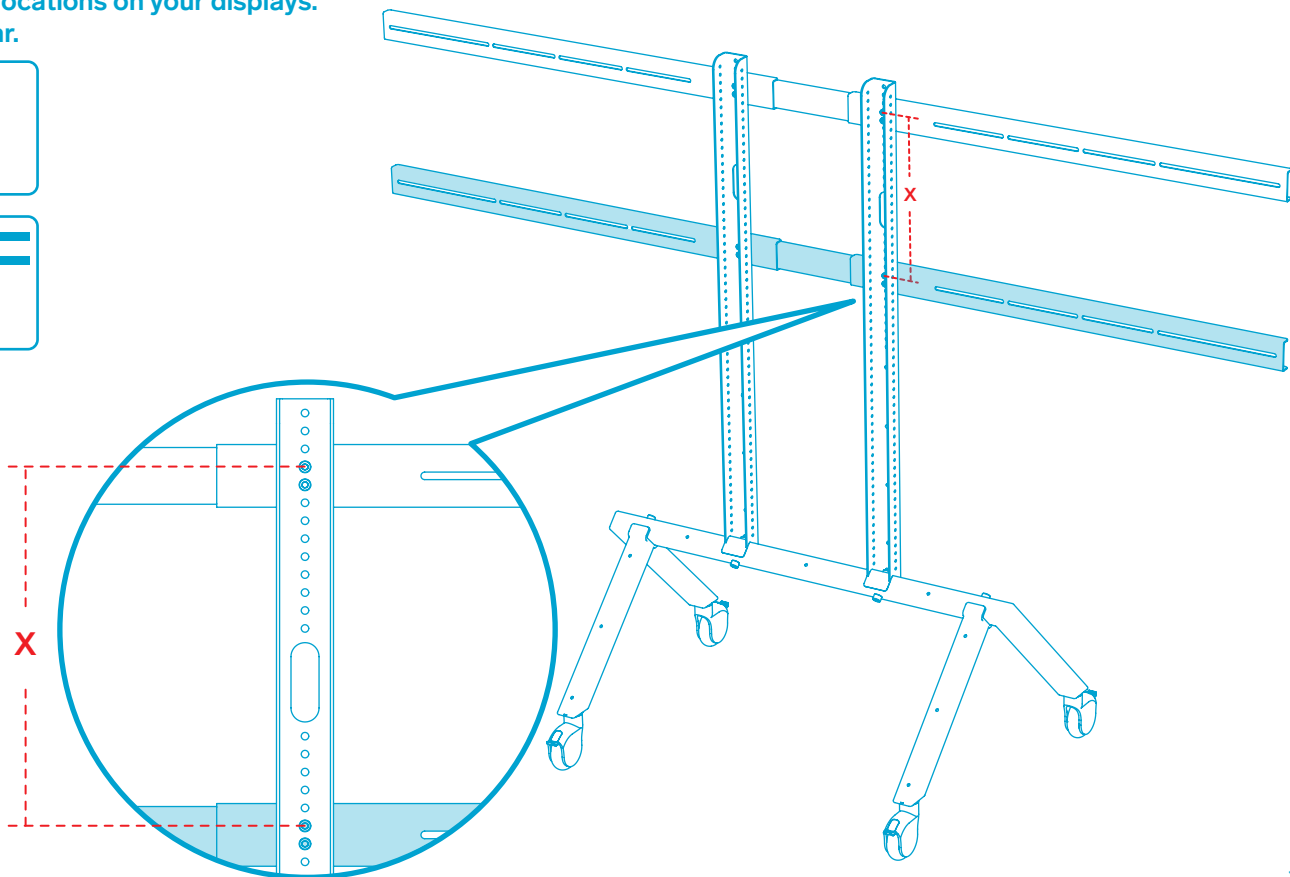
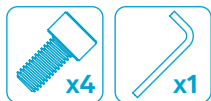
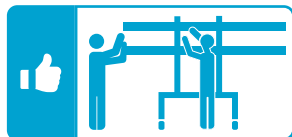
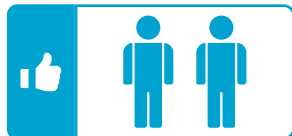
STEP 6

Install the first bar.

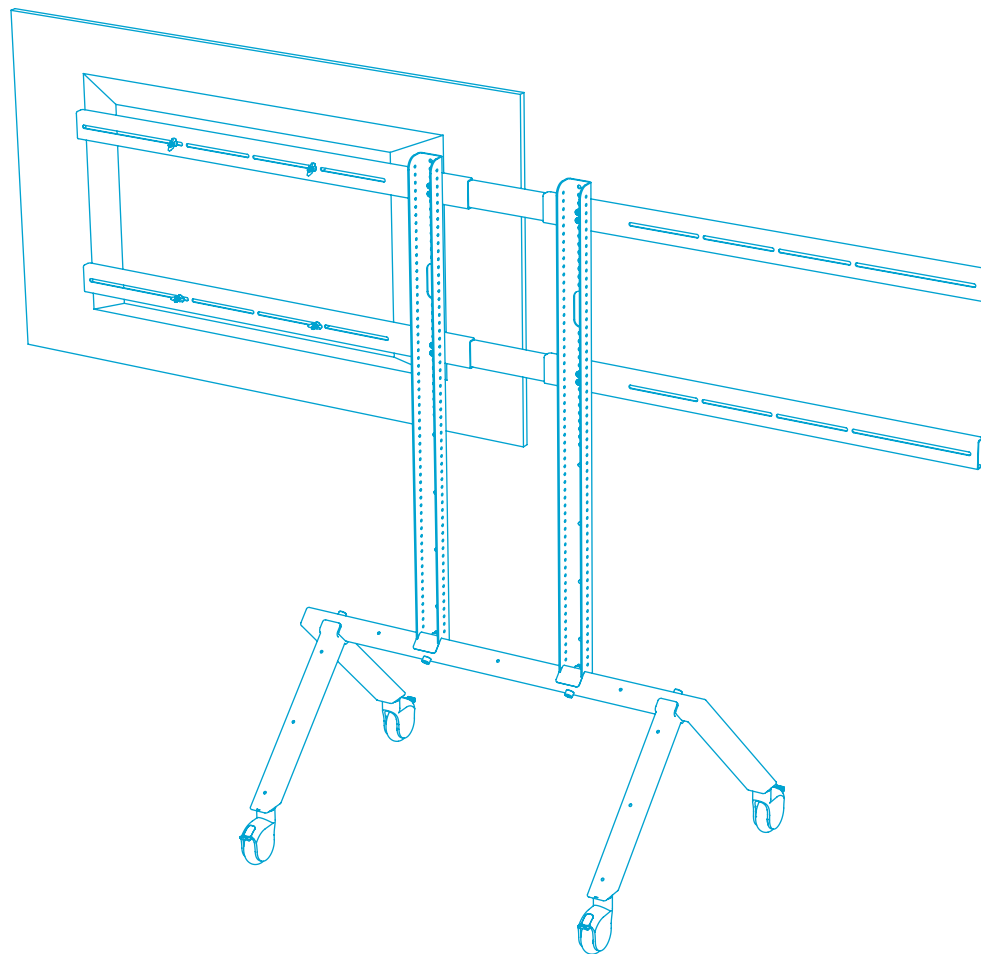
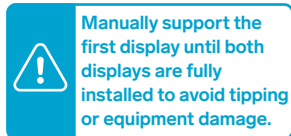


STEP 7

Position the lower bar to properly align with the VESA mounting locations on your displays.
Install the second bar.

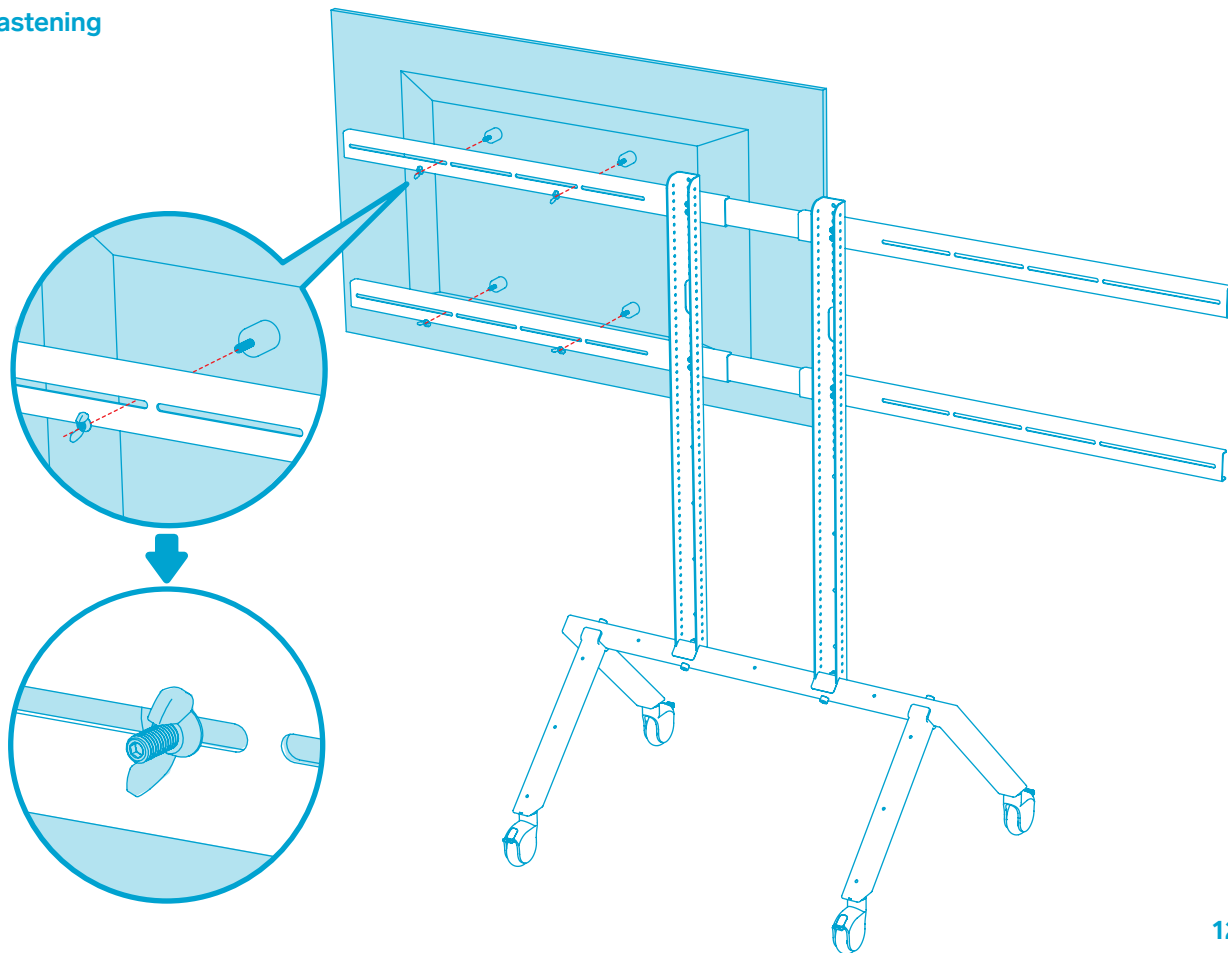
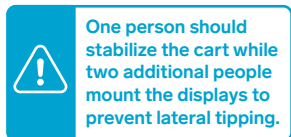
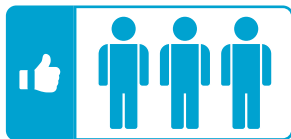


TIP WARNING.



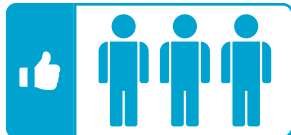
STEP 8

Install the first display by fastening wingnuts.

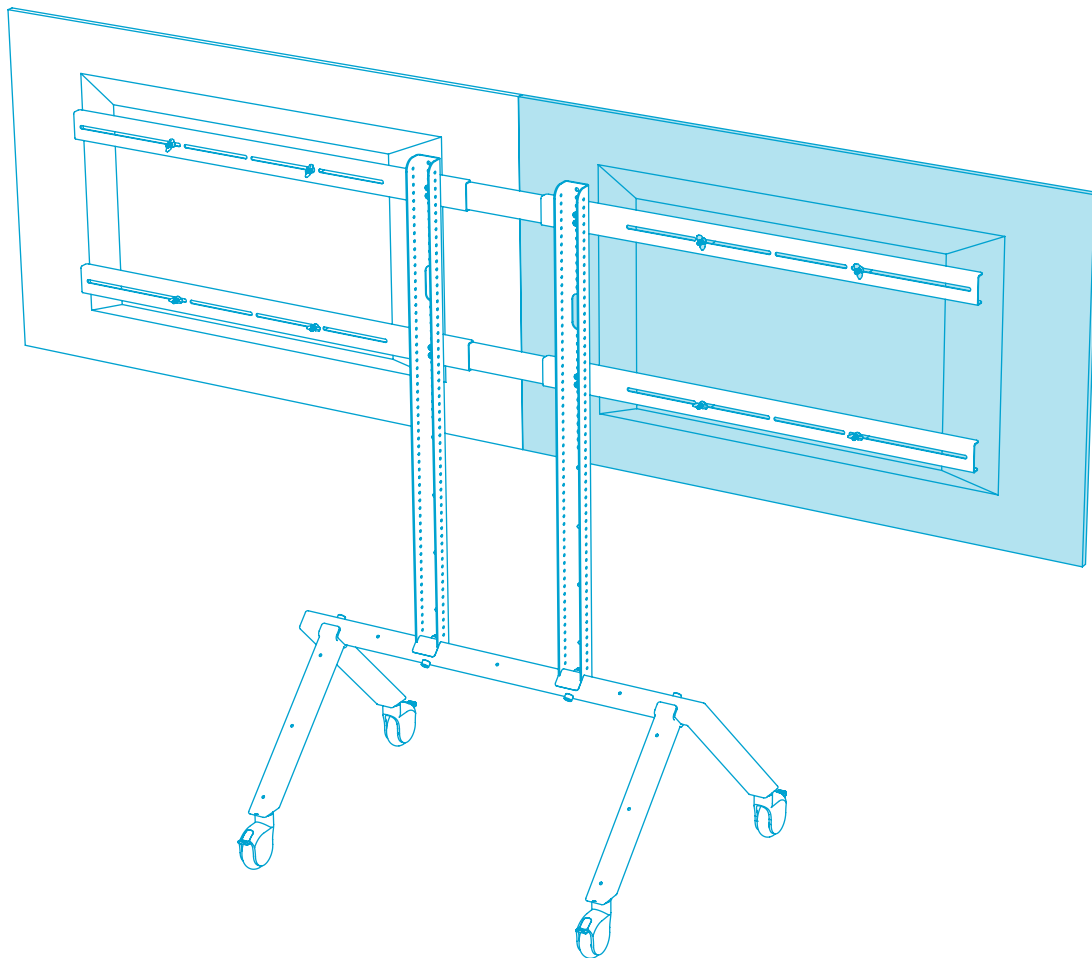


STEP 9

Install the second display.



One person should stabilize the cart while two additional people mount the displays to prevent lateral tipping.



Tip

Adjust display-mounting wingnuts to bring displays even with each other and close the center gap.

